

Crawler crane

LR 1300.1 SX

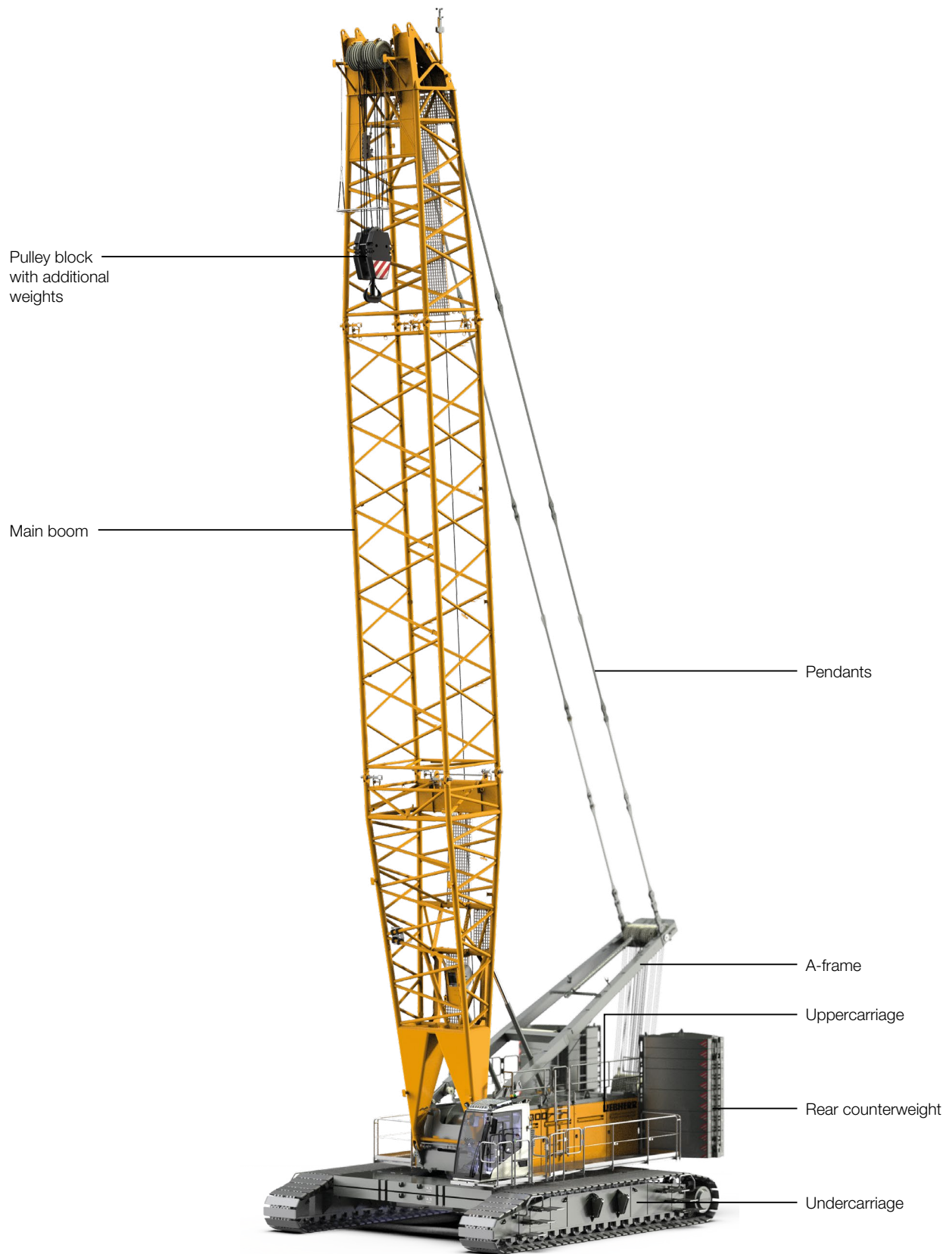
EN

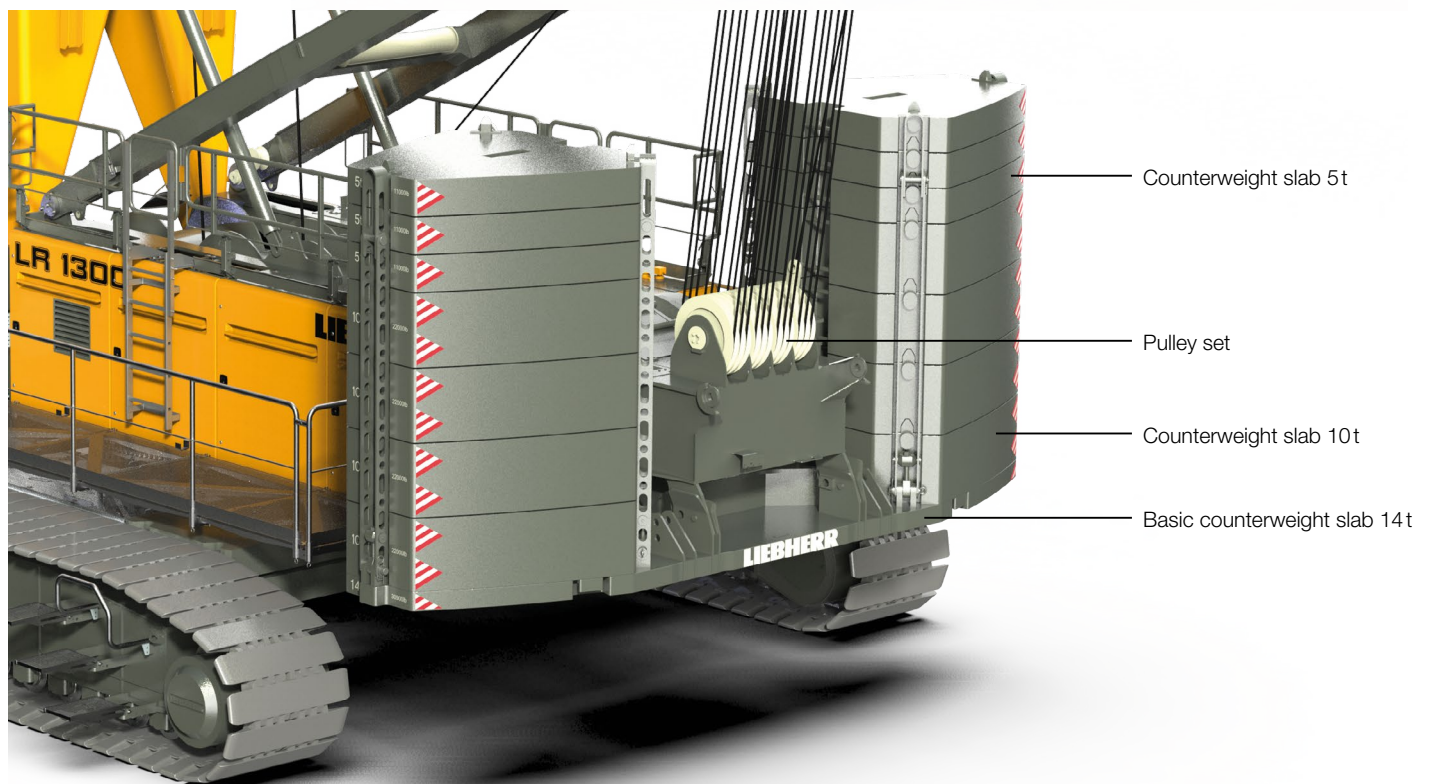
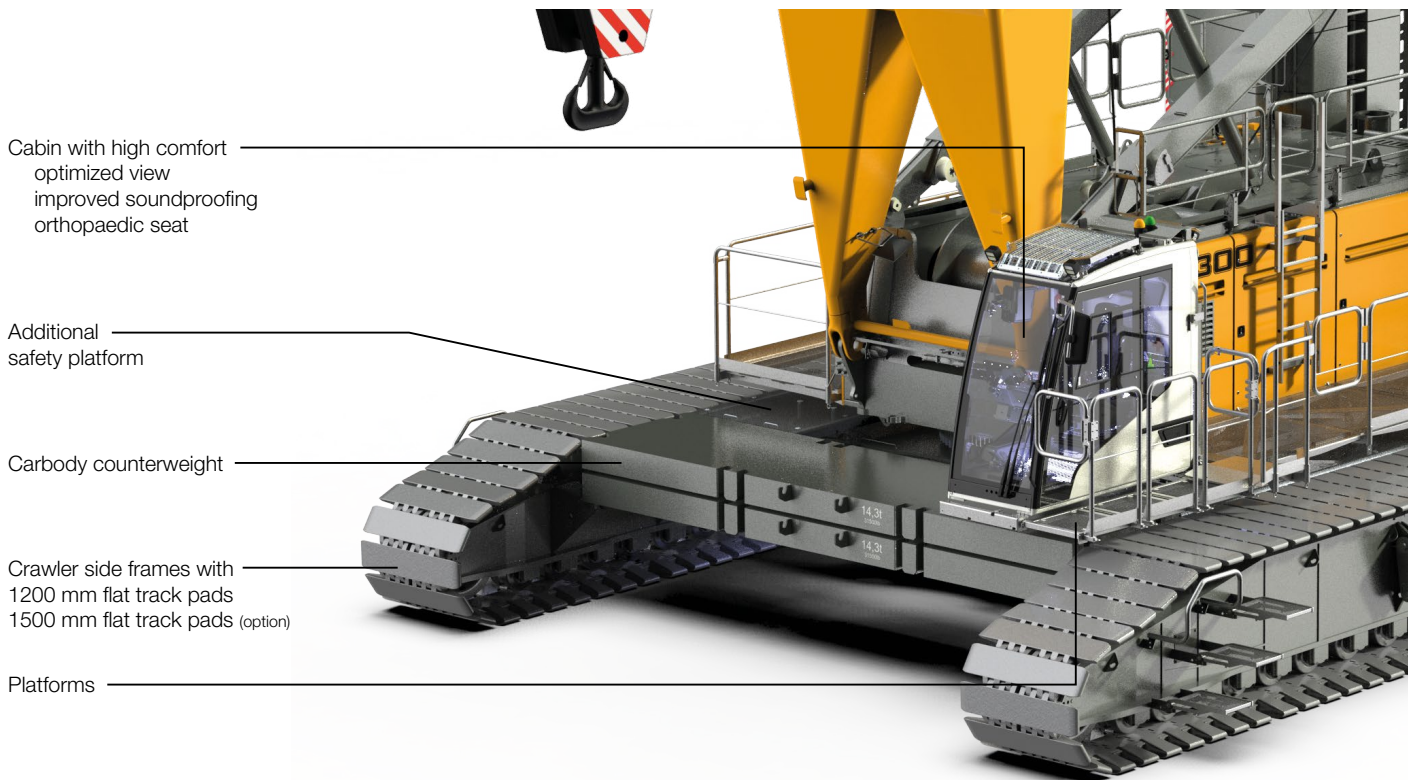
LR 1006.02.07



LIEBHERR

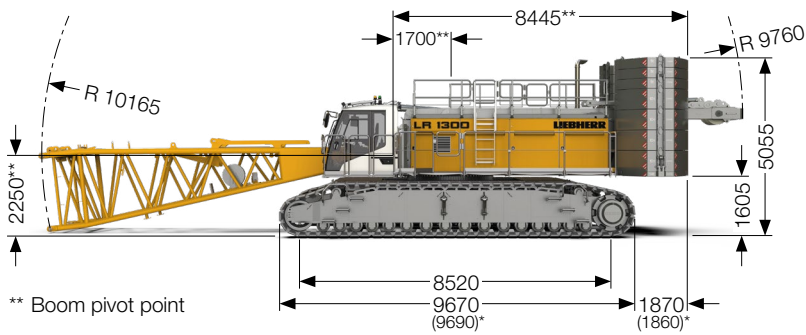
Concept and characteristics





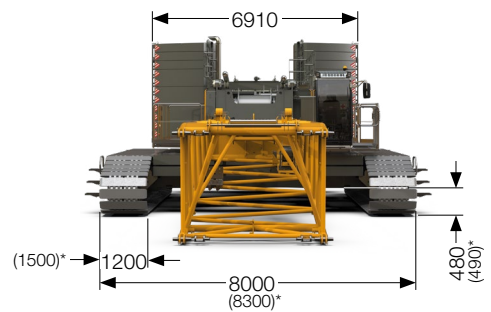
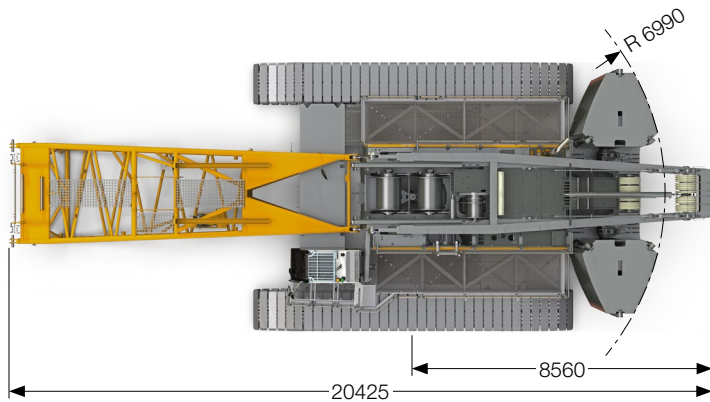
Dimensions

Standard



** Boom pivot point

* Option: crawler side frames with 1500 mm flat track pads



Operating weight

The operating weight includes the basic machine with crawler side frames, winches 1+2 (2x 150 kN) incl. 2 hoist ropes (2x 240 m) and 20 m main boom, consisting of A-frame, boom foot (10 m), boom head (7 m), boom section (3 m), 124 t rear counterweight, 57 t carbody counterweight and 300 t pulley block.

Total weight approx. 290 t

Ground pressure

The actual ground pressure is calculated according to the configuration and position of the machine and displayed in the operator's cabin. Using the optional Liebherr Crane Planner the actual ground pressure can already be calculated and displayed in the planning stage.

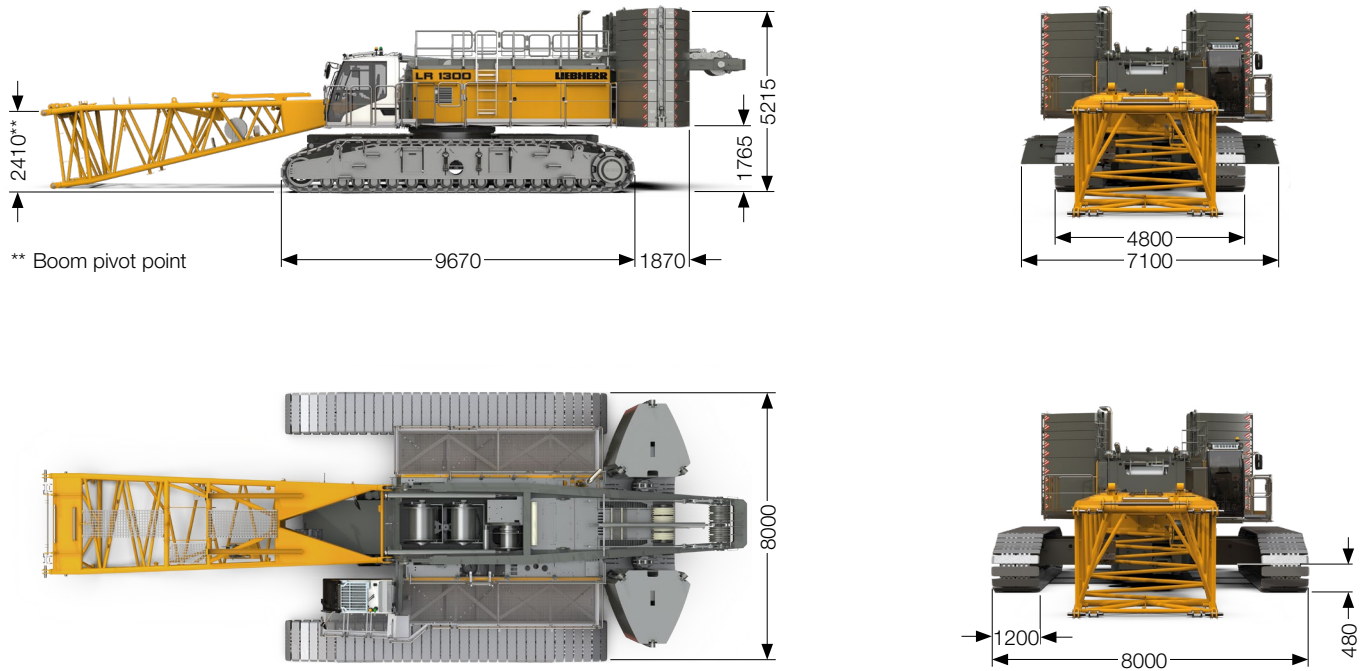
Equipment

Main boom (No. 2821.xx)	20-92 m
Fixed jib (No. 0906.21)	7 m
Fixed jib (No. 1507.20)	8 m
Fixed jib (No. 1008.xx)	11-26 m
Fixed jib (No. 1713.xx)	14-35 m
Luffing jib (No. 1916.xx)	20-95 m
Max. boom combination (main boom 65 m + luffing jib 95 m)	160 m
Luffing jib (No. 2316.xx)	20-113 m
Max. boom combination (main boom 56 m + luffing jib 113 m)	169 m
Auxiliary jib for main boom (No. 2821.xx)	36 t
Auxiliary jib for luffing jib (No. 1916.xx)	15 t
Auxiliary jib for luffing jib (No. 2316.xx)	30/45 t

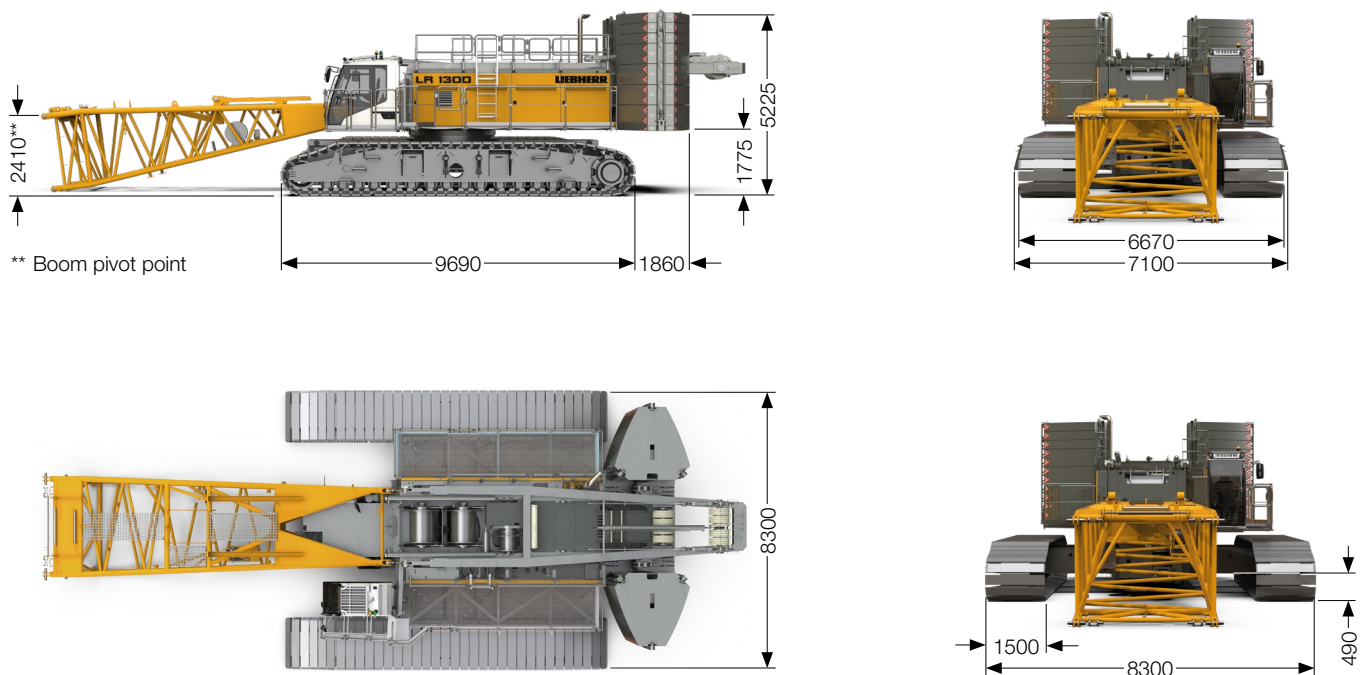
Remarks

- The lifting capacities stated are valid for lifting operation only (corresponding with crane classification according to ISO 4301-1, crane group A1).
- Machine standing on firm, horizontal ground.
- The weight of the lifting device (pulley block, hoist ropes, shackle etc.) must be deducted from the gross lifting capacity to obtain a net lifting value.
- Additional equipment on boom (e.g. platforms) must be deducted from the load capacity.
- The max. admissible wind speed can be preselected in the LML software and is shown in the load chart.
- Working radii are measured from centre of swing and under load.
- The lifting capacities are valid for 360 degrees of swing.
- Calculation of stability under load is based on ISO 4305 Table 1+2+3, tipping angle 4°.
- The structures are calculated according to EN 13001-1; EN 13001-2.
- The last digits of the given dimensions are rounded to 0 and 5 and may differ from the actual dimensions.
- Weights may vary depending on the delivered configuration of the machine, filling level of the tanks as well as generally valid tolerances.
- The figures in this brochure may include options which are not within the standard scope of supply of the machine.

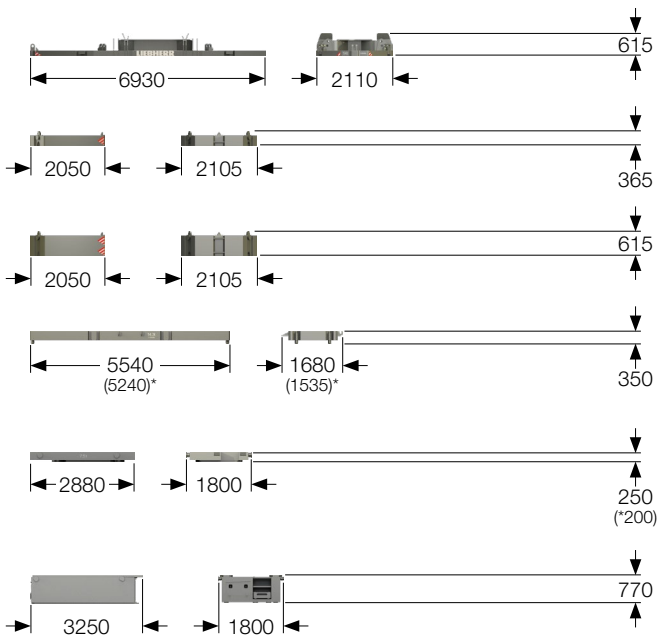
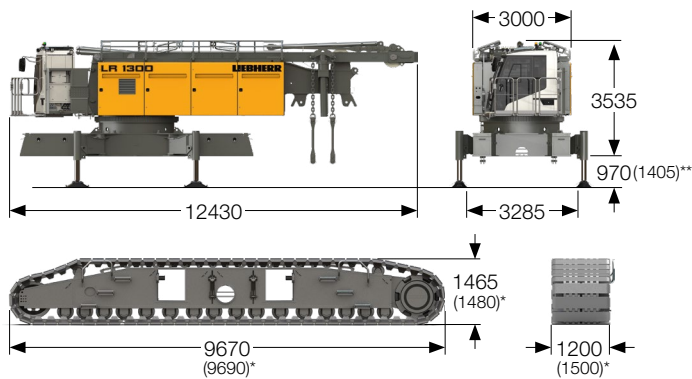
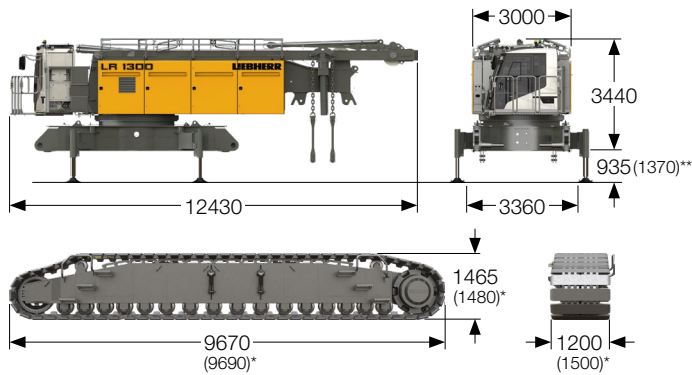
Undercarriage with adjustable track width – 1200 mm flat track pads (option)



Undercarriage with adjustable track width – 1500 mm flat track pads (option)



Transport dimensions and weights



Basic machine

Basic machine

with A-frame 1, winches 1 + 2 (2x 150kN), without boom foot, without rear counterweight, without carbody counterweight and crawler side frames

Weight without hoist rope	46000 kg
Weight of hoist rope	4.2 kg/m

Crawler side frame

2x

	Standard	Option
Flat track pads	1200 mm	1500 mm
Weight	22350 kg	26200 kg

Basic machine with adjustable track width (option)

with A-frame, winches 1 + 2 (2x 150kN), without boom foot, without rear counterweight, without carbody counterweight and crawler side frames

Weight without hoist rope	46500 kg
Weight of hoist rope	4.2 kg/m

Crawler side frame adjustable (option)

2x

	Standard	Option
Flat track pads	1200 mm	1500 mm
Weight	23000 kg	26850 kg

Counterweight

Basic counterweight slab without tie-down

1x

Weight	14000 kg
--------	----------

Counterweight slab

6x

Weight	5000 kg
--------	---------

Counterweight slab

8x

Weight	10000 kg
--------	----------

Carbody counterweight (for undercarriage with fixed track width)

4x

	Standard	Option*
Weight	14300 kg	13400 kg

Carbody counterweight (for undercarriage with adjustable track width)

2x

	Standard	Option*
Weight	7500 kg	5550 kg

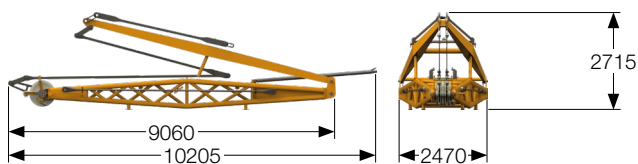
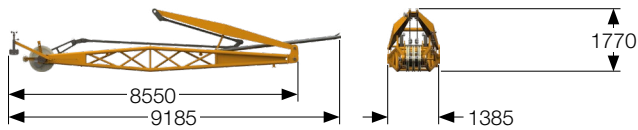
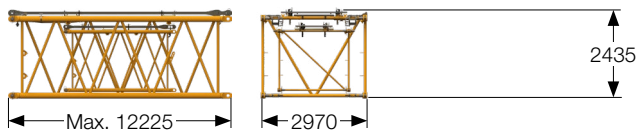
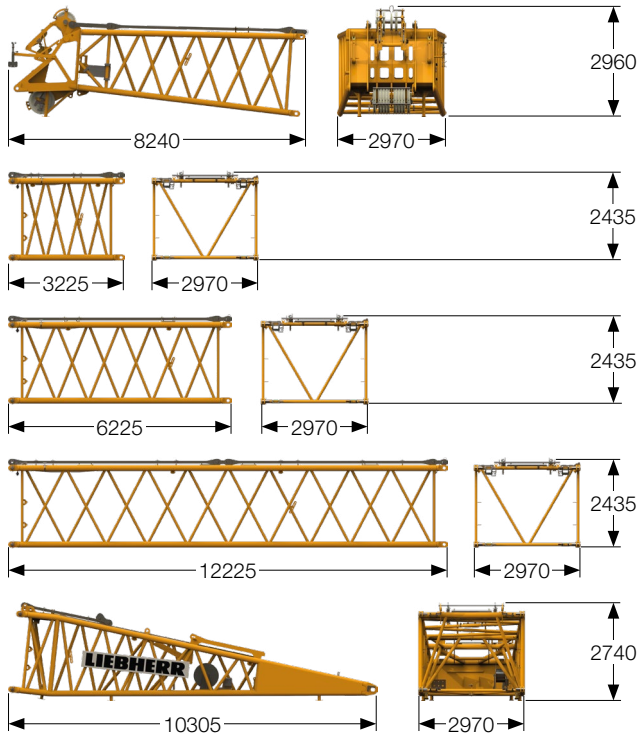
Carbody counterweight (for undercarriage with adjustable track width)

2x

Weight	18800 kg
--------	----------

* Option: crawler side frames with 1500 mm flat track pads

** Option: telescopic jack-up cylinders



Main boom (No. 2821.xx)

Boom head (No. 2821.24)	7 m
Weight incl. boom pendants	5400 kg

Boom section (No. 2821.30)	3 m
Weight incl. boom pendants	1400 kg
Weight incl. boom and jib pendants	1500 kg

Boom section (No. 2821.30)	6 m
Weight incl. boom pendants	2130 kg
Weight incl. boom and jib pendants	2310 kg

Boom section (No. 2821.30)	12 m
Weight incl. boom pendants	3760 kg
Weight incl. boom and jib pendants	4120 kg

Boom foot (No. 2821.30)	10 m
Weight incl. winch with rope	7400 kg
Weight without winch	5700 kg

Transport option

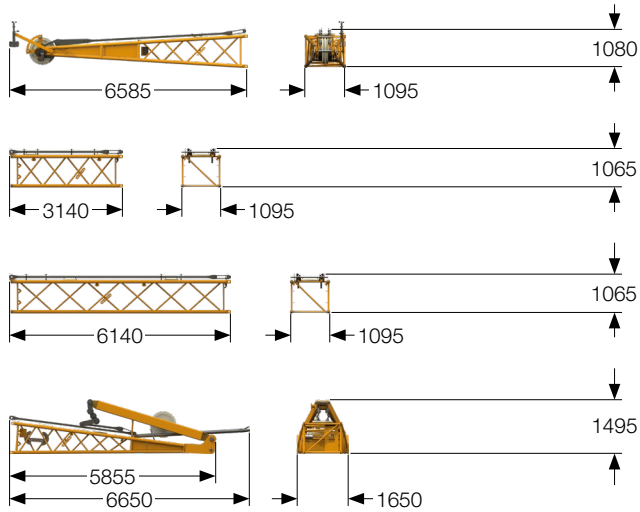
Transport option (No. 2821.xx/2316.xx)			
3 m main boom and jib section			
6 m main boom and jib section			
12 m main boom and jib section			
	3/3 m	6/6 m	12/12 m
Weight incl. pendants	2100 kg	3260 kg	5920 kg

Fixed jib (No. 0906.21)

Fixed jib (No. 0906.21)	7 m
Weight incl. pendants	2400 kg

Fixed jib (No. 1507.20)

Fixed jib (No. 1507.20)	8 m
Weight incl. pendants	3300 kg



Fixed jib (No. 1008.xx)

Jib head (No. 1008.20) **5.5 m**

Weight incl. pendants 920 kg

Jib section (No. 1008.17) **3 m**

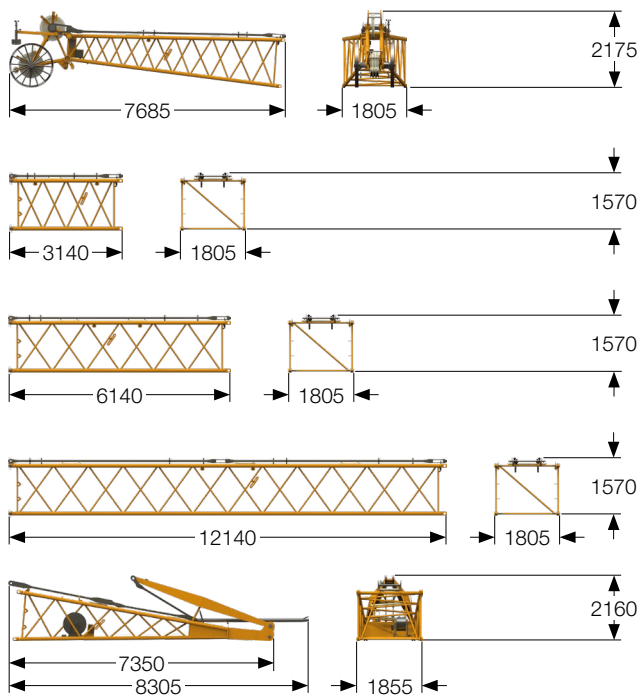
Weight incl. pendants 300 kg

Jib section (No. 1008.17) **6 m**

Weight incl. pendants 630 kg

Jib foot with A-frame (No. 1008.20) **5.5 m**

Weight incl. pendants 1950 kg



Fixed jib (No. 1713.xx)

Jib head (No. 1713.21) **7 m**

Weight incl. pendants 1375 kg

Jib section (No. 1713.18) **3 m**

Weight incl. pendants 420 kg

Jib section (No. 1713.18) **6 m**

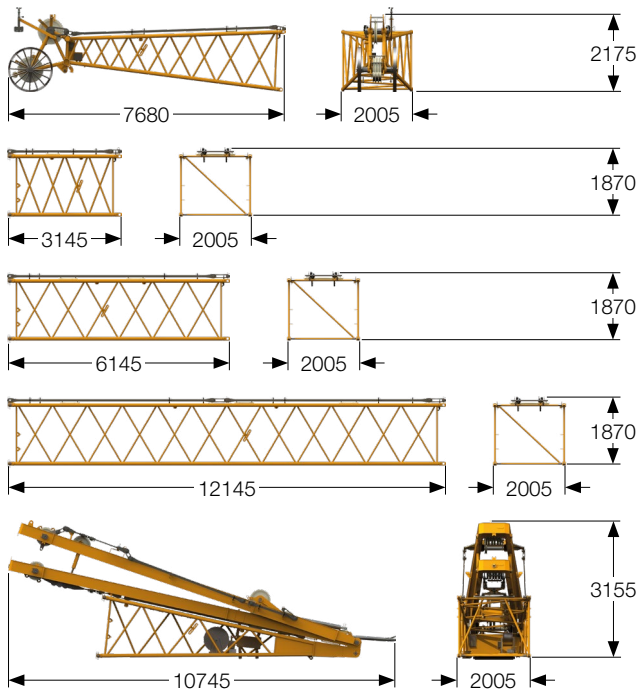
Weight incl. pendants 630 kg

Jib section (No. 1713.18) **12 m**

Weight incl. pendants 1140 kg

Jib foot with A-frame (No. 1713.22) **7 m**

Weight incl. pendants 4620 kg



Luffing jib (No. 1916.xx)

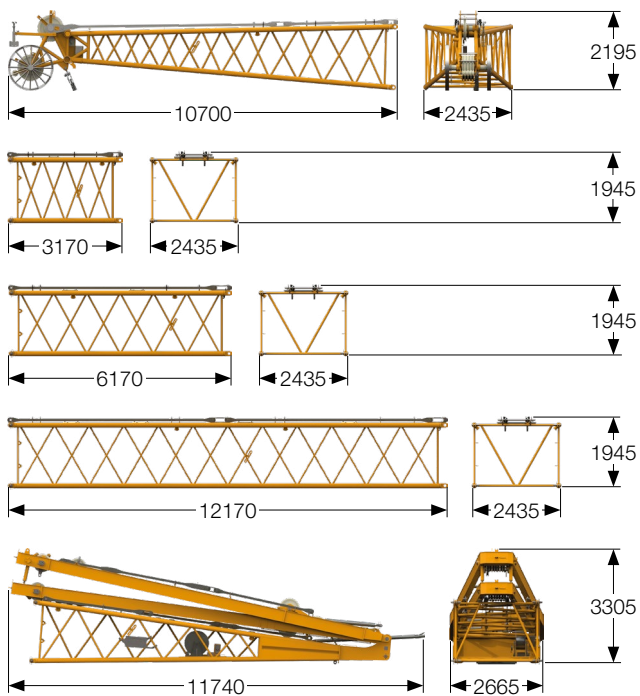
Jib head (No. 1916.21) **7 m**
Weight incl. pendants 1550 kg

Jib section (No. 1916.18) **3 m**
Weight incl. pendants 475 kg

Jib section (No. 1916.18) **6 m**
Weight incl. pendants 690 kg

Jib section (No. 1916.18) **12 m**
Weight incl. pendants 1250 kg

Jib foot with A-frames 2 + 3 (No. 1916.22) **7 m**
Weight incl. pendants 6300 kg



Luffing jib (No. 2316.xx)

Jib head (No. 2316.20) **10 m**
Weight incl. pendants 2300 kg

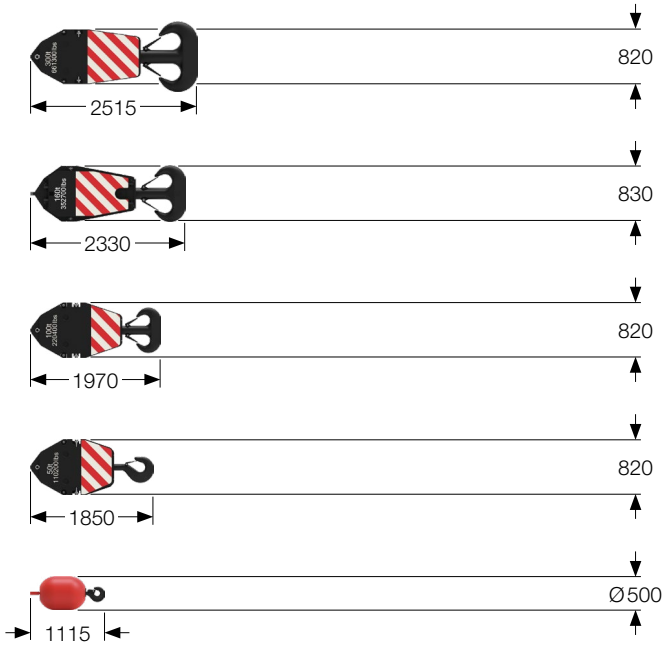
Jib section (No. 2316.20) **3 m**
Weight incl. pendants 600 kg

Jib section (No. 2316.20) **6 m**
Weight incl. pendants 950 kg

Jib section (No. 2316.20) **12 m**
Weight incl. pendants 1800 kg

Jib foot with A-frames 2 + 3 (No. 2316.22) **10 m**
Weight incl. pendants 8060 kg

Pulley block with additional weights / load hooks



300 t pulley block – 11 pulleys

Width	1220 mm
Weight	3200/5500 kg

160 t pulley block – 5 pulleys

Width	925 mm
Weight	1600/2800/4000 kg

100 t pulley block – 3 pulleys

Width	625 mm
Weight	1100/2050/3000 kg

50 t pulley block – 1 pulley

Width	540 mm
Weight	800/1600/2400 kg

16 t load hook

Weight	900 kg
--------	--------

Technical description



Diesel engine

Power rating according to ISO 9249, 390 kW (523 hp) at 1700 rpm
Engine type ————— Liebherr D 946 A7-04
Fuel tank ————— 750 l capacity with continuous level indicator and reserve warning
Engine complies with NRMM exhaust certification EPACARB Tier 4f and 97/68 EC Stage IV.



Hydraulic system

A double axial displacement pump supplies the main boom and luffing jib winch and the crawlers in open circuits. Winches 1 + 2 and the swing gear work in closed circuits. All movements can be performed simultaneously. To minimize peak pressure an automatic working pressure cut-off is integrated in the pump. All filters are electronically monitored. The use of synthetic environmentally friendly oil is also possible. Furthermore, an emergency operation mode is installed.

Working pressure ————— max. 350 bar
Hydraulic oil tank capacity — 650 l



Luffing jib winch

Line pull ————— max. 138 kN
Rope diameter ————— 20 mm
Jib luffing ————— 69 sec. from 15° to 78°



Boom winch

Line pull ————— max. 180 kN
Rope diameter ————— 24 mm
Boom up ————— 127 sec. from 15° to 86°



Crawlers

Propulsion through axial piston motor, hydraulically released spring loaded multi-disc brake, crawler tracks, hydraulic chain tensioning device.

Flat track pads ————— 1200 mm (option 1500 mm)
Drive speed ————— 0-1.23 km/h



Swing gear

Consists of rollerbearing with external teeth, swing gear with fixed axial piston hydraulic motor, spring loaded and hydraulically released multi-disc holding brake, planetary gearbox and pinion. Both swing modes are possible – speed control or free swing. A multi-disc holding brake acts automatically at zero swing motion.
Swing speed from 0 -1.8 rpm continuously variable.



Hoisting gear

Standard crane winches 1 + 2
Line pull in the 1st layer ————— max. 215 kN
Line pull in the 7th layer ————— 150 kN
Rope diameter ————— 28 mm
Drum diameter ————— 730 mm
Rope speed ————— 0-113.5 m/min
Rope capacity in 7 layers ————— 570 m

The winches are outstanding in their compact design and easy assembly. Propulsion is via a planetary gearbox in an oil bath. Load support by the hydraulic system; additional safety factor by a spring-loaded, multi-disc holding brake. The main winches use pressure controlled, variable flow hydraulic motors. This system features sensors that automatically adjust oil flow to provide max. winch speed depending on load.

Optional free-fall winches:

Line pull in the 1st layer (crane operation) ————— max. 190 kN
Line pull in the 7th layer (crane operation) ————— 130 kN
Line pull in the 1st layer (free-fall operation) ————— max. 170 kN
Line pull in the 7th layer (free-fall operation) ————— 118 kN
Rope diameter ————— 28 mm
Drum diameter ————— 730 mm
Rope speed ————— 0-130 m/min
Rope capacity in 7 layers ————— 570 m

The winches are outstanding in their compact design and easy assembly. Clutch and braking functions on the free-fall system are provided by a compact designed, low wear and maintenance-free multi-disc brake.



Control

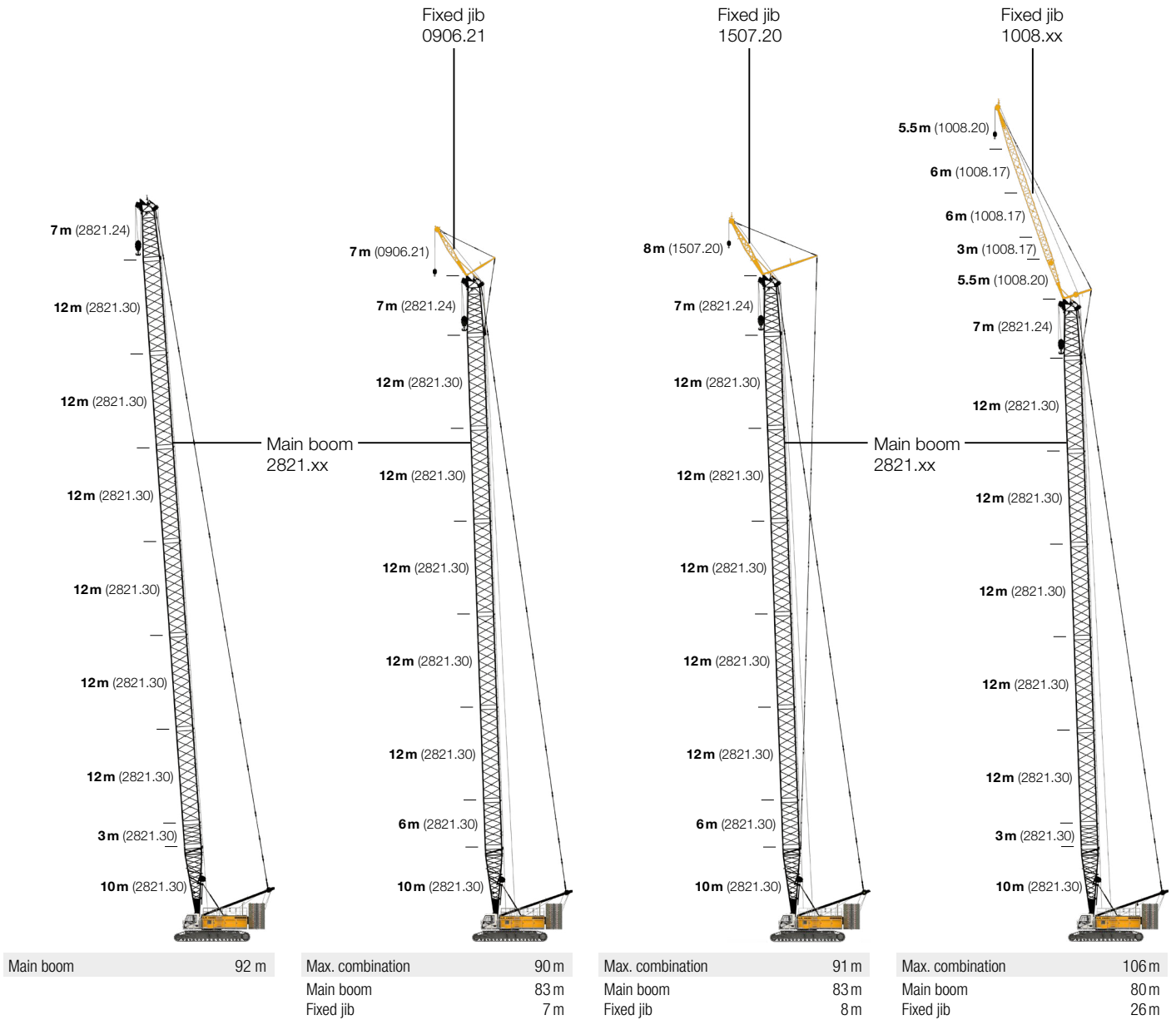
The heart of the hydraulic crawler cranes is the Liebherr control system which has been developed and manufactured in-house. It includes all control and monitoring functions and is designed to withstand extreme environmental conditions and heavy duty construction tasks. Complete machine operating data as well as warning signals and irregularities are clearly displayed on the monitor in the operator's cabin in the required language. The electro-hydraulic proportional control allows several movements to be performed simultaneously and precisely. Moreover, the power cut-off depends on the preselected and expected wind speed and the preselected drive speed level. The operating mode "Lifting" is supplied as a standard. As an option operating modes such as grab operation, personnel lifting, foundation work according to EN 16228 (e.g. vibrator and leader operation) and barge charts can be enabled in the software. The display of ground pressure and centre of gravity is another option.



Noise measurement data and vibration

Noise emissions correspond with 2000/14/EC directive.
Emission sound pressure level L_{PA} in the cabin ————— 71.1 dB(A)
Guaranteed sound power level L_{WA} ————— 110 dB(A)
Vibration transmitted to the hand-arm system of the machine operator ————— < 2.5 m/s²
Vibration transmitted to the whole body of the machine operator ————— < 0.5 m/s²

Boom combinations

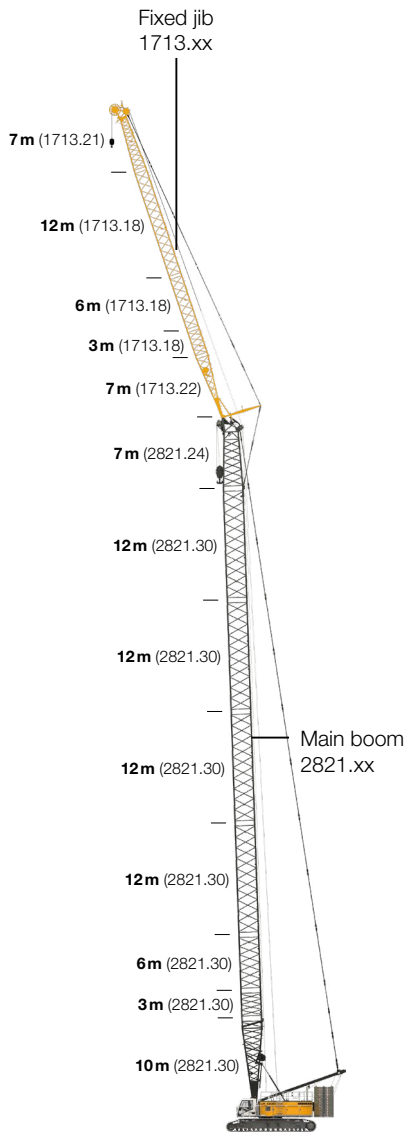


Further information on page 16.

Further information on page 18.

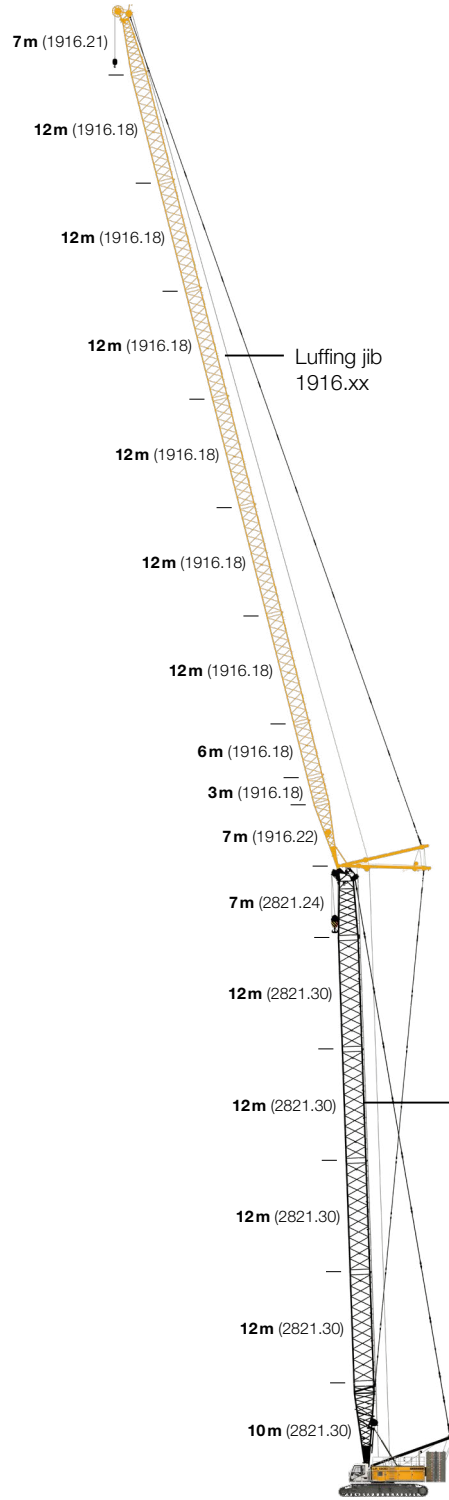
Further information on page 20.

Further information on page 22.



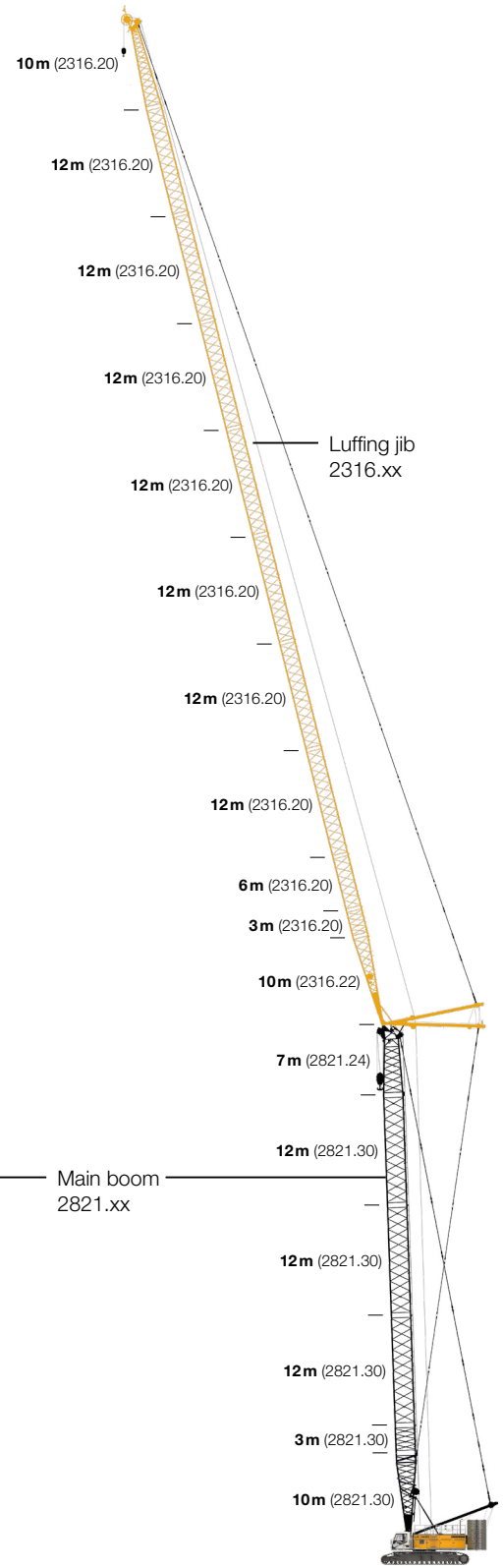
Max. combination	109 m
Main boom	74 m
Fixed jib	35 m

Further information on page 25.



Max. combination	160 m
Main boom	65 m
Luffing jib	95 m
Max. combination	115 m
Main boom	71 m
Luffing jib	44 m

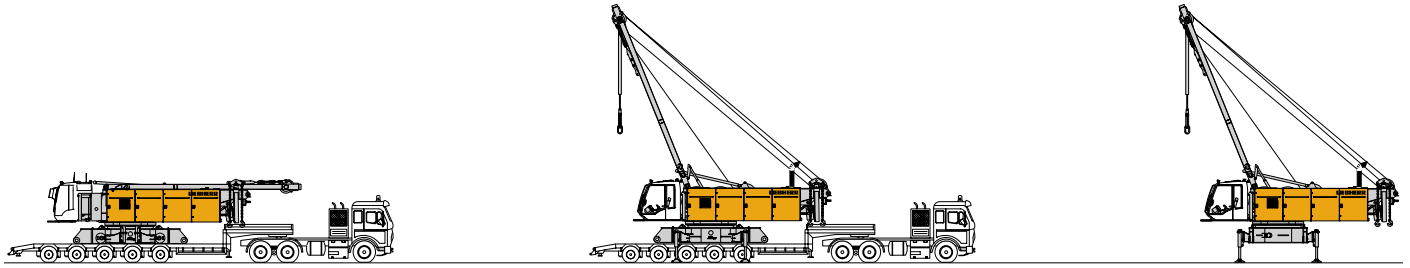
Further information on page 28.



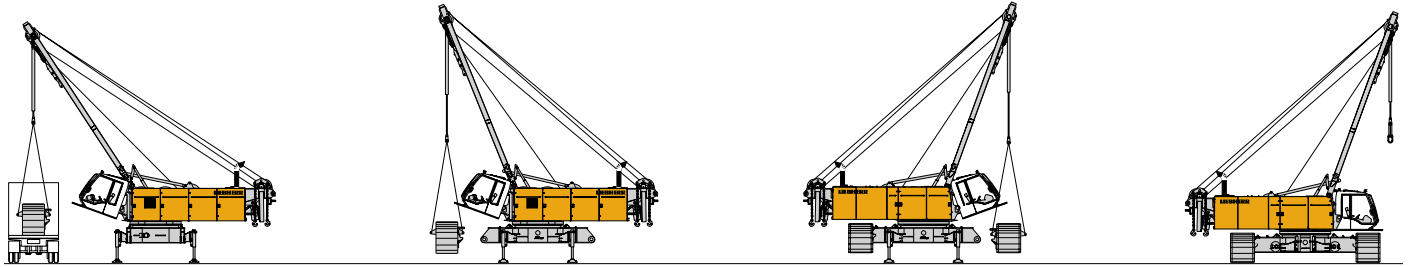
Max. combination	169 m
Main boom	56 m
Luffing jib	113 m
Max. combination	106 m
Main boom	68 m
Luffing jib	38 m

Further information on page 32.

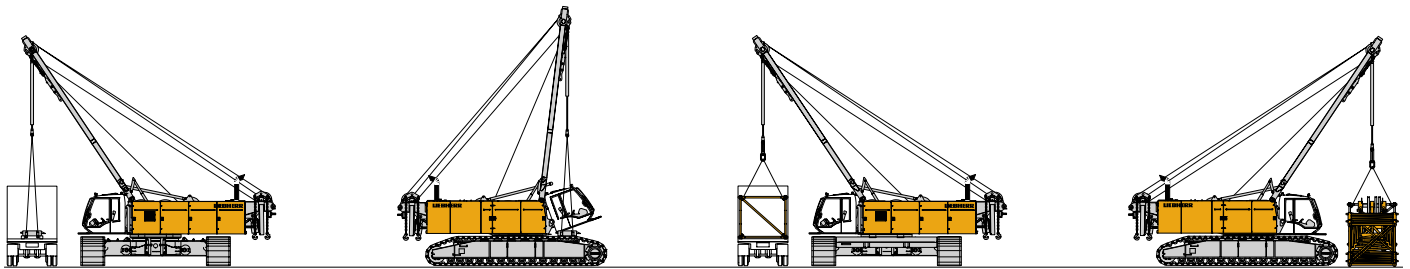
Self-assembly system of the crawler crane series



Unloading of basic machine

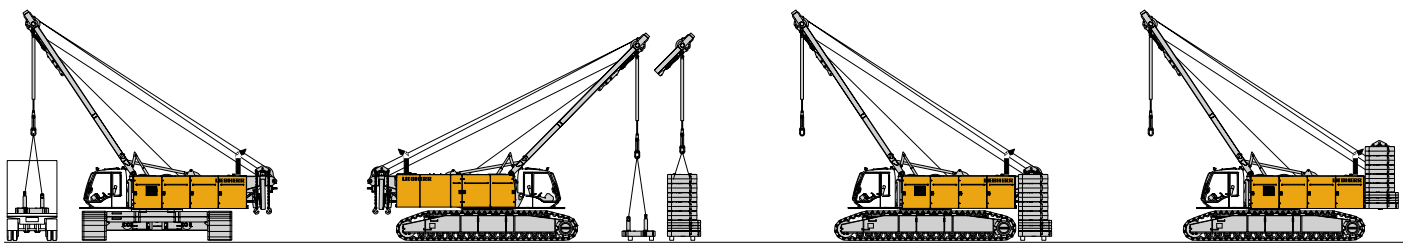


Unloading and assembly of crawler side frames

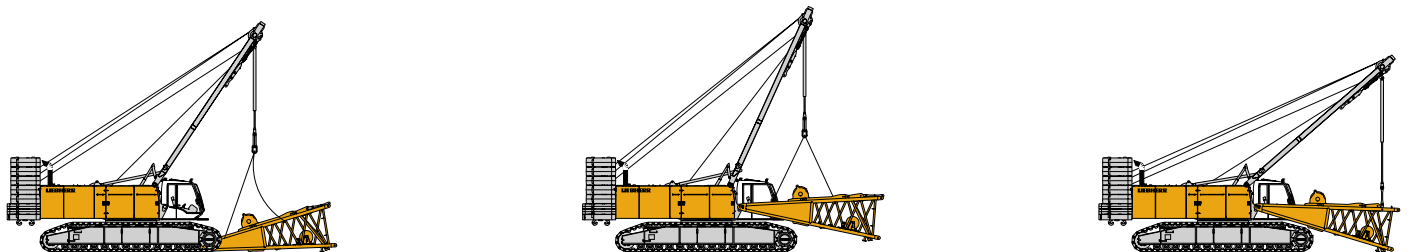


Unloading and assembly of carbody counterweight

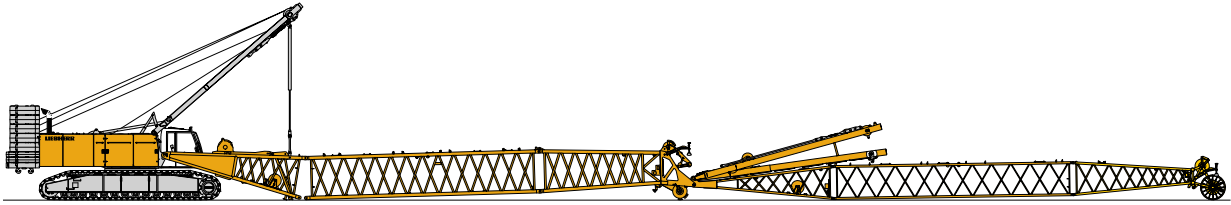
Unloading and assembly of boom



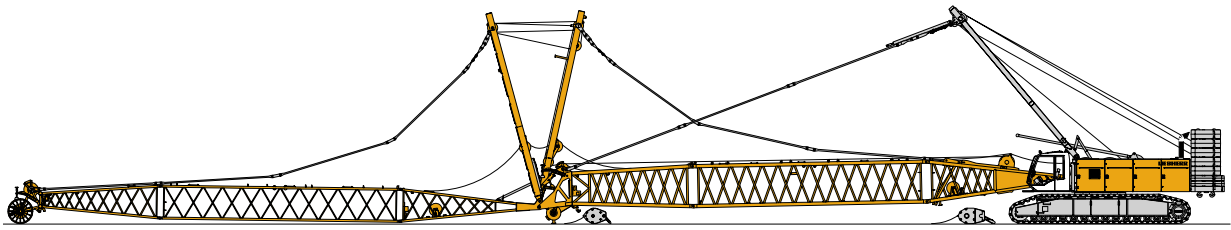
Unloading and assembly of rear counterweight



Unloading and assembly of main boom foot



Assembly of boom



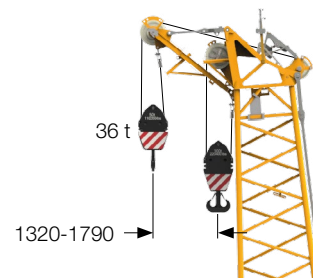
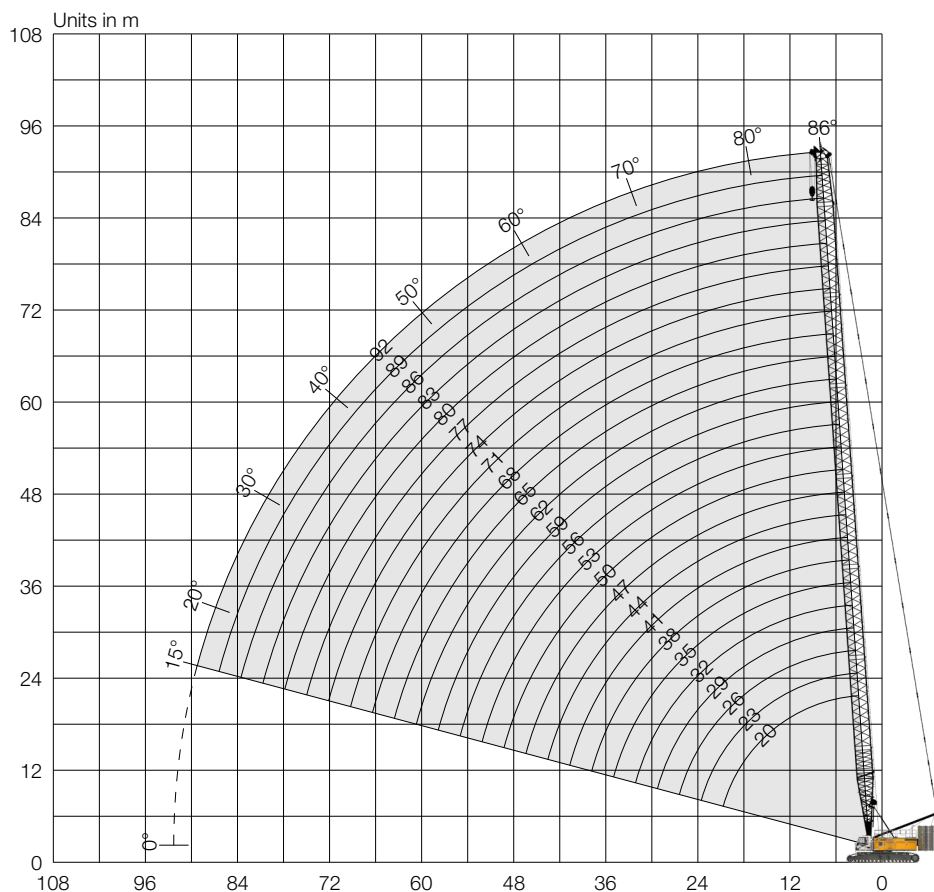
Reeving of hoist and luffing jib ropes



Erecting of main boom and luffing jib

Main boom (No. 2821.xx)

Main boom 86-15°, 20-92 m



Auxiliary jib 36 t (option)
 The maximum capacity of the auxiliary jib is 36 t. The corresponding load chart is programmed in the LML system.

Main boom 92 m

Main boom configuration (No. 2821.xx)

	Length	Amount of boom sections																								
Boom foot	10 m	1	1	1	1	1	1	1	1	1	1	1	1	1	1	1	1	1	1	1	1	1	1			
Boom section	3 m	1		1		1		1		1		1		1		1		1		1		1				
Boom section	6 m		1	1		1	1		1	1		1	1		1	1		1	1		1	1				
Boom section	12 m				1	1	1	1	2	2	2	2	3	3	3	3	4	4	4	4	5	5	5	5	6	6
Boom head	7 m	1	1	1	1	1	1	1	1	1	1	1	1	1	1	1	1	1	1	1	1	1	1	1	1	
Boom length [m]		20	23	26	29	32	35	38	41	44	47	50	53	56	59	62	65	68	71	74	77	80	83	86	89	92
Auxiliary jib applicable		✓	✓	✓	✓	✓	✓	✓	✓	✓	✓	✓	✓	✓	✓	✓	✓	✓	✓	✓	✓	✓	✓	✓	✓	✓

Load capacities with main boom (No. 2821.xx)

Load capacities with 104 t rear counterweight and 57 t carbody counterweight

Radius [m]	Boom length [m]														Radius [m]	
	20	23	26	32	38	44	50	56	62	68	74	80	83	86		
	[t]	[t]	[t]	[t]	[t]	[t]	[t]	[t]	[t]	[t]	[t]	[t]	[t]	[t]	[t]	
4.3	300.5															4.3
5	300.5	296.3	299.6													5
6	262.9	260.0	256.1	245.5	236.5	213.4										6
7	225.5	225.3	222.0	215.8	206.9	198.3	189.3	169.3								7
8	195.9	195.7	195.2	191.1	184.6	178.4	168.6	161.3	151.1	135.3						8
9	172.9	172.8	172.2	171.8	166.0	160.2	152.7	145.0	137.8	131.1	118.7	103.1	95.6	88.9		9
12	126.8	126.7	126.2	125.8	122.6	117.3	112.1	107.4	102.8	98.5	94.4	90.5	87.5	83.3		12
14	107.0	106.9	106.5	106.1	102.8	98.7	94.7	91.0	87.3	83.9	80.5	77.4	75.8	74.3		14
16	89.2	89.3	89.2	89.1	88.1	84.8	81.5	78.5	75.5	72.6	69.8	67.1	65.8	64.5		16
20	65.2	65.5	65.4	65.3	64.8	64.5	63.1	60.8	58.5	56.4	54.2	52.2	51.1	50.1		20
24		50.8	50.8	50.8	50.3	49.9	49.3	48.8	47.1	45.3	43.5	41.8	40.9	40.0		24
26			45.3	45.4	44.9	44.5	43.9	43.4	42.6	41.0	39.3	37.7	36.9	36.0		26
32				33.7	33.4	33.0	32.4	31.8	31.2	30.6	29.5	28.2	27.5	26.7		32
38					25.7	25.4	24.8	24.3	23.6	23.0	22.3	21.4	20.8	20.1		38
42						21.6	21.0	20.5	19.8	19.2	18.5	17.9	17.4	16.7		42
50							15.3	15.0	14.3	13.7	13.0	12.4	12.0	11.6		50
55								12.3	11.7	11.1	10.4	9.7	9.4	9.0		55
60									9.4	8.9	8.2	7.5	7.2	6.8		60
65										7.0	6.3	5.7	5.4	5.0		65
70											4.7	4.1	3.7	3.2		70
75												2.5	2.1			75

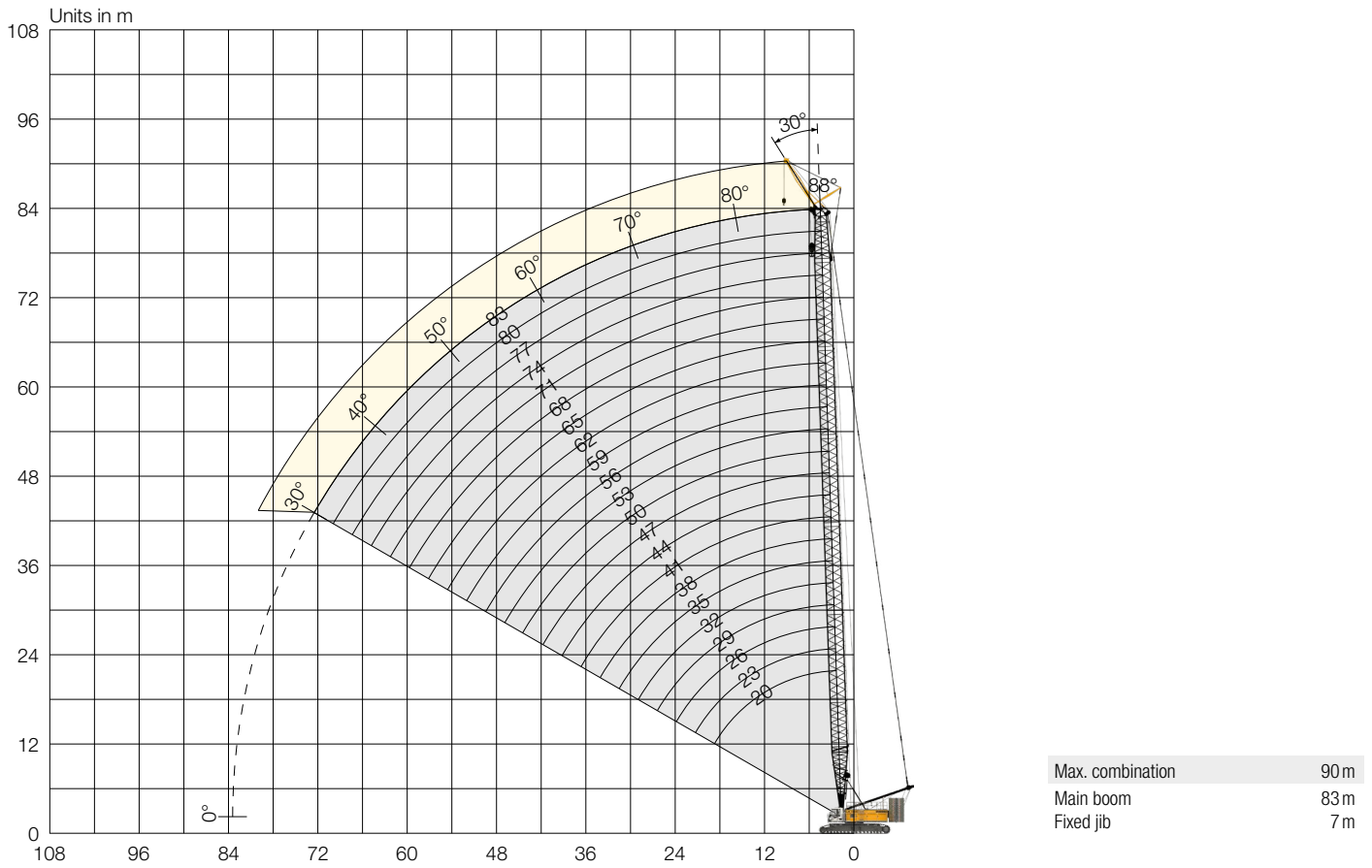
Load capacities with 124 t rear counterweight and 57 t carbody counterweight

Radius [m]	Boom length [m]																Radius [m]
	20	23	26	32	38	44	50	56	62	68	74	80	83	86	89	92	
	[t]	[t]	[t]	[t]	[t]	[t]	[t]	[t]	[t]	[t]	[t]	[t]	[t]	[t]	[t]	[t]	
6.4							189.3										6.4
7							189.3	169.3									7
8					184.6	178.4	168.6	161.3	151.1	135.3							8
9					166.0	160.2	154.1	146.1	138.5	131.7	118.7	103.1	95.6	88.9			9
10			161.2	156.5	152.3	145.7	139.9	134.5	127.6	120.2	111.8	101.7	95.6	88.9	83.5	78.3	10
12	136.7	136.7	134.7	132.8	127.3	124.0	119.6	113.5	108.4	103.5	97.8	91.8	87.5	83.3	79.3	75.4	12
14	115.5	115.5	115.0	112.8	110.3	106.2	102.8	99.0	94.1	89.0	84.1	81.3	79.4	77.1	75.0	71.7	14
16	99.5	99.5	99.1	98.2	95.6	93.5	89.6	86.2	82.8	78.9	73.9	71.3	69.5	67.5	65.9	63.9	16
20	74.2	74.5	74.4	74.3	73.8	73.2	71.3	68.8	65.4	61.8	59.1	57.4	56.3	54.5	53.3	51.4	20
24		58.0	58.0	58.0	57.5	57.1	56.5	56.0	54.0	51.0	48.6	46.8	45.8	44.4	43.4	42.2	24
26			51.9	52.0	51.5	51.1	50.5	50.0	49.3	46.6	44.8	43.0	41.8	40.6	39.5	38.4	26
32				38.9	38.6	38.2	37.6	37.0	36.4	35.8	35.0	33.5	32.8	31.9	31.0	30.1	32
38					30.0	29.7	29.1	28.6	27.9	27.3	26.6	25.9	25.3	24.6	24.0	23.3	38
44						23.6	23.1	22.6	21.9	21.3	20.5	19.9	19.6	19.2	18.6	18.0	44
50							18.5	18.1	17.4	16.8	16.1	15.4	15.1	14.7	14.4	14.0	50
55								15.1	14.5	13.9	13.1	12.6	12.2	11.7	11.5	11.0	55
60									12.1	11.5	10.8	10.2	9.8	9.3	8.9	8.3	60
65										9.4	8.7	7.9	7.5	6.9	6.6	6.1	65
70											6.7	5.9	5.5	4.9	4.6	4.1	70
75												4.1	3.7	3.2	2.9	2.3	75
80													2.1				80

TLT 11959002. Above load charts are for reference only.
For actual lift duty please refer to load chart in operator's cabin or manual.

Fixed jib (No. 0906.21)

Main boom 88-30°, 20-83 m | Fixed jib 30°, 7 m



Main boom configuration (No. 2821.xx)

	Length	Amount of boom sections																					
		20	23	26	29	32	35	38	41	44	47	50	53	56	59	62	65	68	71	74	77	80	83
Boom foot	10 m	1	1	1	1	1	1	1	1	1	1	1	1	1	1	1	1	1	1	1	1	1	1
Boom section	3 m	1		1		1		1		1		1		1		1		1		1		1	
Boom section	6 m		1	1			1	1			1	1			1	1			1	1			1
Boom section	12 m				1	1	1	1	2	2	2	2	3	3	3	3	4	4	4	4	5	5	5
Boom head	7 m	1	1	1	1	1	1	1	1	1	1	1	1	1	1	1	1	1	1	1	1	1	1
Jib length [m]		20	23	26	29	32	35	38	41	44	47	50	53	56	59	62	65	68	71	74	77	80	83

Load capacities with fixed jib 30° (No. 0906.21) | 124 t rear counterweight and 57 t carbody counterweight

Main boom 20 m

Radius [m]	[t]
14	61.6
15	59.6
16	57.4
17	55.5
18	54.2
19	52.9
20	51.6
22	49.2
24	47.8
26	46.9

Main boom 26 m

Radius [m]	[t]
13	67.6
14	65.0
15	62.9
16	61.1
17	59.5
18	57.8
19	56.2
20	54.9
22	52.9
24	50.8
26	49.0
28	47.5
30	43.7
32	39.8

Main boom 32 m

Radius [m]	[t]
11	74.5
12	71.6
14	67.9
16	63.9
18	60.8
20	58.0
22	55.5
24	53.6
26	51.3
28	47.8
30	43.5
32	39.7
34	36.4
36	33.5

Main boom 38 m

Radius [m]	[t]
10	78.1
12	73.7
14	69.5
16	66.5
18	63.1
20	60.5
22	58.0
24	55.4
26	52.4
28	47.3
30	42.9
34	35.9
38	30.4
42	26.1

Main boom 44 m

Radius [m]	[t]
9	81.4
10	79.2
12	74.9
14	71.2
16	68.1
18	65.3
20	62.5
24	57.1
28	46.9
32	38.7
36	32.6
40	27.8
44	23.9
48	20.6

Main boom 50 m

Radius [m]	[t]
9	81.9
10	79.8
12	75.8
14	72.9
16	69.5
20	62.9
24	55.9
28	46.3
32	38.1
36	32.0
40	27.2
44	23.3
48	20.1
50	18.6

Main boom 56 m

Radius [m]	[t]
8.3	82.6
10	80.2
12	76.6
14	73.7
16	70.8
20	65.7
24	54.9
28	45.8
32	37.6
36	31.4
40	26.7
44	22.8
48	19.6
55	15.1

Main boom 62 m

Radius [m]	[t]
8.5	82.1
10	80.6
12	77.3
14	74.2
16	71.7
20	65.2
28	44.6
32	37.0
36	30.8
40	26.0
44	22.1
48	18.9
55	14.4
60	11.9

Main boom 68 m

Radius [m]	[t]
8.7	81.5
10	80.9
12	78.1
14	74.8
16	72.8
20	62.4
28	43.0
32	36.1
36	30.2
40	25.5
44	21.5
48	18.3
55	13.9
65	9.1

Main boom 74 m

Radius [m]	[t]
8.9	80.9
10	80.9
12	77.8
14	75.1
16	72.8
20	62.1
28	41.4
36	29.3
40	24.7
44	20.9
48	17.6
55	13.2
65	8.2
70	6.1

Main boom 80 m

Radius [m]	[t]
9.1	79.4
10	79.4
12	77.3
14	74.8
16	71.7
20	60.0
28	39.9
36	28.2
40	23.9
44	20.3
48	17.0
55	12.5
65	7.4
75	3.5

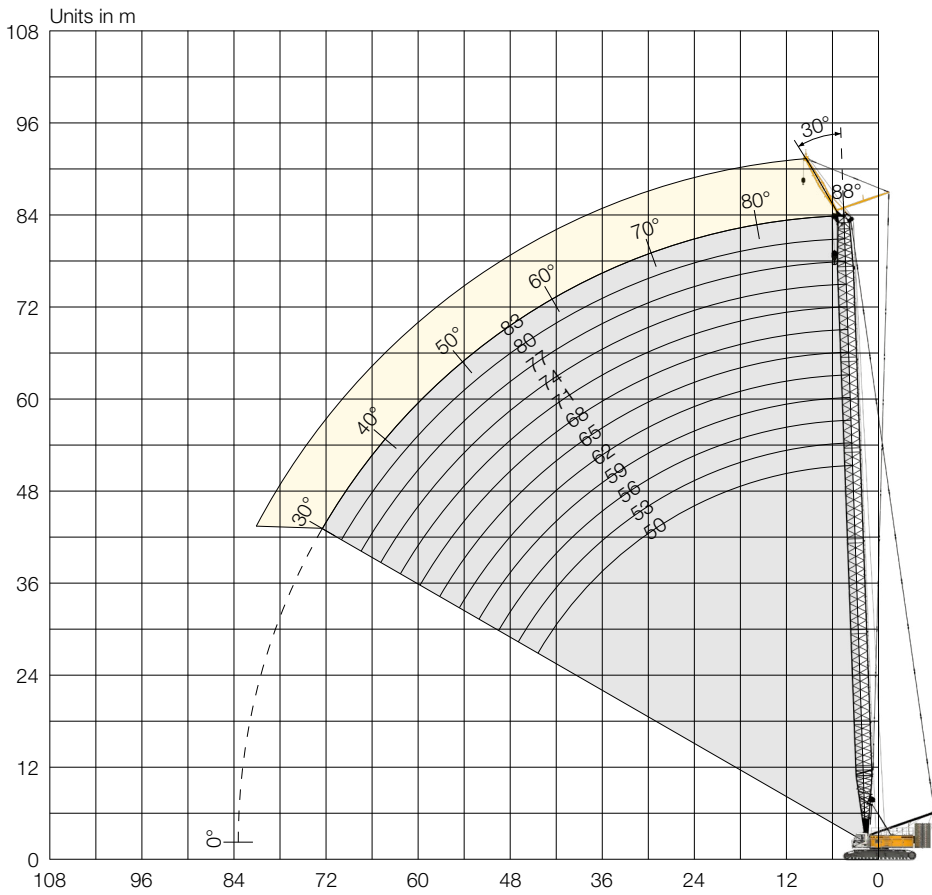
Main boom 83 m

Radius [m]	[t]
9.2	77.7
10	77.7
12	75.2
14	72.0
16	68.4
20	58.9
28	39.1
36	27.4
40	23.2
44	19.7
48	16.7
55	12.2
65	7.0
75	3.1

TLT 11959002. Above load charts are for reference only.
For actual lift duty please refer to load chart in operator's cabin or manual.

Fixed jib (No. 1507.20)

Main boom 88-30°, 50-83 m | Fixed jib 30°, 8 m



Max. combination	91 m
Main boom	83 m
Fixed jib	8 m

Main boom configuration (No. 2821.xx)

	Length	Amount of jib sections											
		10 m	12 m	15 m	18 m	21 m	24 m	27 m	30 m	33 m	36 m	39 m	
Jib foot	10 m	1	1	1	1	1	1	1	1	1	1	1	
Boom section	3 m	1		1		1		1		1		1	
Boom section	6 m	1			1	1			1	1		1	
Boom section	12 m	2	3	3	3	3	4	4	4	4	5	5	
Jib head	7 m	1	1	1	1	1	1	1	1	1	1	1	
Jib length [m]		50	53	56	59	62	65	68	71	74	77	80	83

Load capacities with fixed jib 30° (No. 1507.20) | 124 t rear counterweight and 57 t carbody counterweight

Main boom 50m

Radius [m]	[t]
8	117.0
10	117.0
12	110.9
14	103.6
16	89.1
20	70.4
24	56.9
28	45.9
32	37.7
36	31.5
40	26.8
44	22.9
48	19.6
50	18.2

Main boom 53m

Radius [m]	[t]
8.1	117.0
10	117.0
12	110.2
14	102.5
16	88.8
20	69.3
24	56.0
28	45.7
32	37.5
36	31.3
40	26.6
44	22.7
48	19.4
55	15.0

Main boom 56m

Radius [m]	[t]
8.2	117.0
10	117.0
12	110.6
14	99.9
16	87.2
20	68.1
24	55.0
28	45.4
32	37.2
36	31.0
40	26.2
44	22.3
48	19.1
55	14.6

Main boom 59m

Radius [m]	[t]
8.3	117.0
10	117.0
12	111.9
14	97.5
16	85.7
20	66.9
28	44.7
32	36.9
36	30.7
40	25.9
44	22.0
48	18.8
55	14.3
60	11.8

Main boom 62m

Radius [m]	[t]
8.5	117.0
10	115.2
12	108.2
14	95.2
16	84.2
20	65.7
28	43.8
32	36.5
36	30.3
40	25.6
44	21.6
48	18.4
55	13.9
60	11.4

Main boom 65m

Radius [m]	[t]
8.6	110.3
10	109.3
12	103.7
14	92.0
16	82.7
20	64.7
28	43.1
32	36.2
36	30.1
40	25.3
44	21.4
48	18.2
55	13.7
65	8.9

Main boom 68m

Radius [m]	[t]
8.7	103.7
10	103.3
12	97.8
14	88.8
16	81.3
20	63.5
28	42.3
32	35.4
36	29.7
40	24.9
44	21.0
48	17.8
55	13.3
65	8.4

Main boom 71m

Radius [m]	[t]
8.8	97.8
10	97.8
12	92.4
14	85.4
16	79.1
20	62.4
28	41.5
36	29.3
40	24.5
44	20.7
48	17.5
55	13.0
65	8.0
70	5.8

Main boom 74m

Radius [m]	[t]
8.9	91.8
10	91.8
12	87.0
14	81.5
16	75.9
20	61.3
28	40.7
36	28.6
40	24.2
44	20.3
48	17.1
55	12.6
65	7.4
75	3.5

Main boom 77m

Radius [m]	[t]
9	86.8
10	86.8
12	82.7
14	78.4
16	73.8
20	60.3
28	39.9
36	28.1
40	23.8
44	20.1
48	16.8
55	12.3
65	7.1
75	3.2

Main boom 80m

Radius [m]	[t]
9.2	81.9
10	81.9
12	78.5
14	74.8
16	70.8
20	59.2
28	39.1
36	27.4
40	23.2
44	19.6
48	16.4
55	11.9
65	6.6
75	2.7

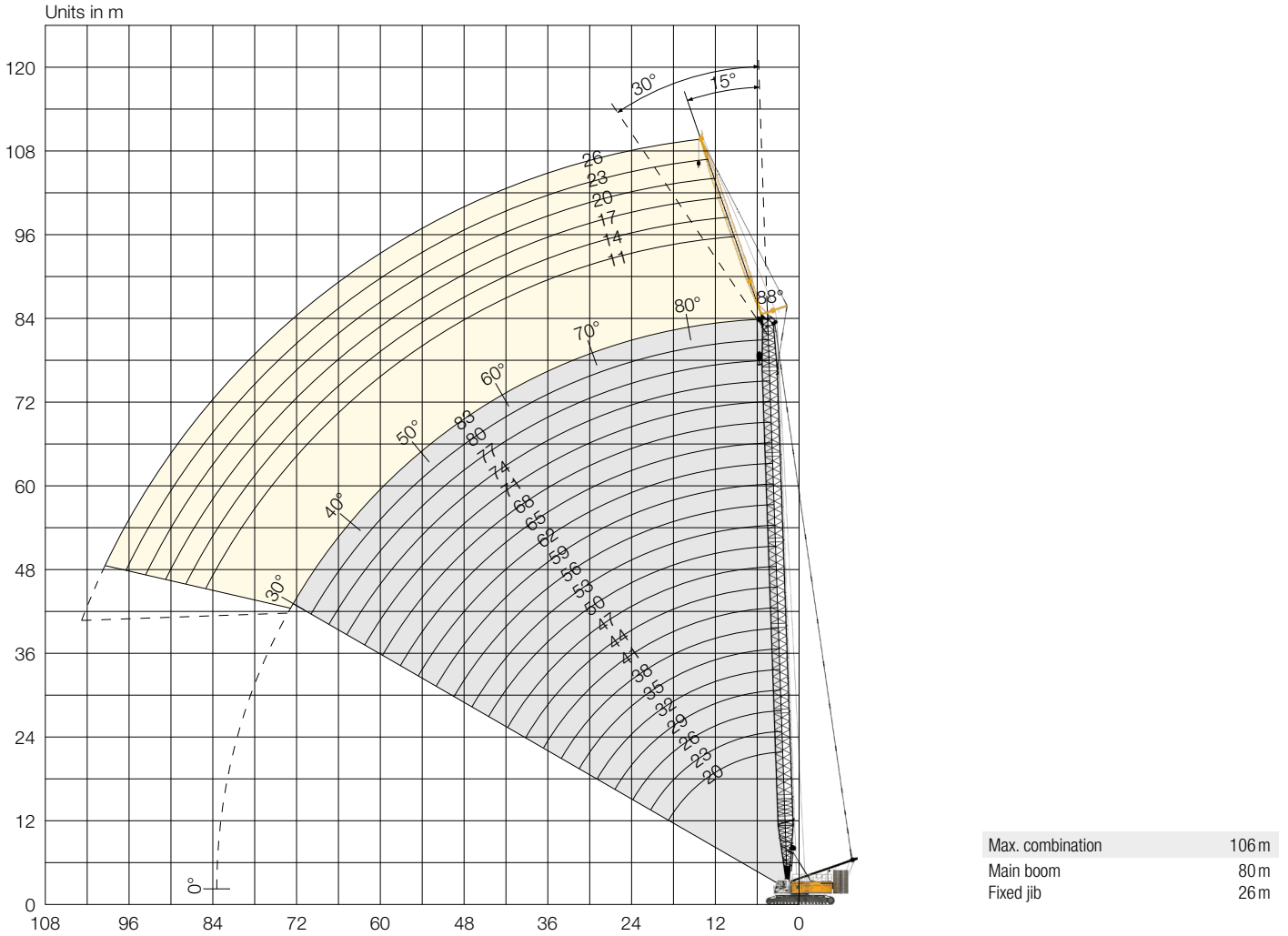
Main boom 83m

Radius [m]	[t]
9.3	76.9
10	76.9
12	74.3
14	71.1
16	67.5
20	58.2
28	38.4
36	26.7
40	22.5
44	19.0
48	16.1
55	11.5
65	6.2
75	2.3

TLT 11962213. Above load charts are for reference only.
For actual lift duty please refer to load chart in operator's cabin or manual.

Fixed jib (No. 1008.xx)

Main boom 88-30°, 20-83 m | Fixed jib 15° and 30°, 11-26 m



Load capacities with fixed jib 15° (No. 1008.xx) | 124t rear counterweight and 57t carbody counterweight

Main boom 20 m

Radius [m]	Jib [m]		
	11 [t]	17 [t]	26 [t]
13	44.2		
14	43.9		
16	40.7	27.4	
18	36.1	24.9	16.3
20	32.8	22.8	15.3
24	28.6	19.1	13.6
28	24.7	16.6	11.9
32		15.1	10.6
36		13.6	9.5
40			8.7
44			8.0

Main boom 29 m

Radius [m]	Jib [m]		
	11 [t]	17 [t]	26 [t]
11	45.0		
12	45.0		
14	44.6	31.5	
16	43.8	29.5	17.8
18	43.2	27.2	16.7
20	39.1	25.2	15.8
24	33.2	22.0	14.4
28	30.1	19.2	13.3
32	26.7	17.2	11.8
36	24.0	15.6	10.7
40		14.7	9.8
44		13.5	9.0
48			8.5

Main boom 41 m

Radius [m]	Jib [m]		
	11 [t]	17 [t]	26 [t]
10	45.0	36.6	
12	45.0	34.3	
14	45.0	32.5	19.1
16	44.8	30.6	18.0
18	43.3	29.1	17.2
20	42.1	27.6	16.3
24	38.6	24.6	14.9
28	34.4	22.3	13.9
32	31.2	19.9	13.2
36	29.3	18.2	12.0
40	26.7	16.1	11.0
44	24.4	15.6	10.3
48	21.3	15.0	50.8
55			8.7
60			8.1

Main boom 59 m

Radius [m]	Jib [m]		
	11 [t]	17 [t]	26 [t]
7.2	45.0		
8	45.0		
10	45.0	36.1	
12	45.0	34.3	
14	44.8	32.5	19.1
16	43.2	31.1	18.2
18	41.9	29.8	16.6
20	40.9	27.5	16.0
24	38.3	26.6	15.4
28	36.5	24.6	14.6
32	33.5	23.4	13.9
36	30.9	21.5	13.4
40	26.3	19.7	12.7
44	22.4	18.6	11.8
48	19.3	17.4	11.1
55	14.9	15.7	10.0
60	12.4	13.3	9.4
65		11.1	8.9
70		9.3	8.5
75			8.1

Main boom 77 m

Radius [m]	Jib [m]		
	11 [t]	17 [t]	26 [t]
8	45.0		
10	45.0		
12	44.5	33.2	
14	42.7	32.0	18.4
16	41.4	30.5	17.8
18	39.5	29.4	17.2
20	37.5	28.4	16.5
24	34.7	26.7	15.5
28	32.7	25.5	14.7
32	31.1	24.2	14.2
36	28.1	23.2	13.7
40	23.9	22.3	13.2
44	20.4	20.0	12.9
48	17.2	18.2	12.2
55	12.8	13.8	11.1
60	10.2	11.3	10.5
65	7.9	8.8	9.6
70	5.4	6.8	8.0
75	4.0	4.9	6.1
80	2.4	3.3	4.5
85			3.0

Main boom 83 m

Radius [m]	Jib [m]	
	11 [t]	14 [t]
8.1	45.0	
10	44.6	42.1
12	44.0	40.0
14	41.7	38.2
16	39.8	36.5
18	38.1	35.2
20	35.9	33.8
24	32.6	31.1
28	30.3	29.3
32	28.5	27.3
36	26.7	25.7
40	22.6	23.0
44	19.2	19.6
48	16.3	16.7
55	12.0	12.6
60	9.3	9.8
65	4.8	7.4
70	3.1	5.3
75		3.5

TLT 11959002. Above load charts are for reference only.
For actual lift duty please refer to load chart in operator's cabin or manual.

Load capacities with fixed jib 30° (No. 1008.xx) | 124 t rear counterweight and 57 t carbody counterweight

Main boom 20 m

Radius [m]	Jib [m]		
	11 [t]	17 [t]	26 [t]
18	17.2	17.2	
20	15.9	15.9	
24	14.5	14.5	9.9
28	12.9	12.9	8.9
32	11.8	11.8	8.0
36	11.3	11.3	7.4
40			6.9
44			6.6

Main boom 29 m

Radius [m]	Jib [m]		
	11 [t]	17 [t]	26 [t]
13	33.3		
14	31.8		
16	30.1	19.3	
18	29.9	18.0	
20	27.1	17.1	11.5
24	23.9	15.3	10.3
28	21.7	14.2	9.4
32	20.0	13.0	8.6
36	19.0	12.1	8.0
40		11.6	7.5
44		11.3	7.0
48			6.7

Main boom 41 m

Radius [m]	Jib [m]		
	11 [t]	17 [t]	26 [t]
11	37.9		
12	36.4		
14	34.1	21.2	
16	31.8	19.9	
18	30.1	18.9	
20	29.7	17.9	11.7
24	26.8	16.4	10.7
28	24.4	15.2	9.8
32	22.6	14.4	9.1
36	21.1	13.3	8.6
40	19.9	12.6	8.0
44	19.2	12.0	7.6
48	18.6	11.6	7.3
55		11.2	6.8
60			6.6

Main boom 59 m

Radius [m]	Jib [m]		
	11 [t]	17 [t]	26 [t]
9.9	45.0		
10	45.0		
12	37.8		
14	35.8	21.4	
16	34.2	20.5	
18	32.4	19.6	
20	30.9	18.2	11.9
24	29.9	17.5	11.1
28	27.6	16.5	10.4
32	25.9	15.5	9.7
36	24.1	15.1	9.2
40	22.7	14.1	8.7
44	21.2	13.3	8.4
48	19.7	12.8	8.0
55	15.2	12.0	7.4
60	12.6	11.6	7.1
65	10.4	11.2	6.9
70		9.4	6.7
75			6.6
80			6.4

Main boom 77 m

Radius [m]	Jib [m]		
	11 [t]	17 [t]	26 [t]
12	38.0		
14	36.6		
16	35.0	20.7	
18	33.7	20.0	
20	32.5	19.3	11.9
24	30.3	18.2	11.3
28	29.4	17.2	10.7
32	27.8	16.4	10.1
36	26.5	15.5	9.6
40	24.1	15.1	9.2
44	21.0	14.6	8.8
48	17.8	13.8	8.5
55	13.3	13.0	7.9
60	10.7	11.7	7.6
65	8.2	9.4	7.3
70	6.1	7.2	7.0
75	4.2	5.3	6.7
80	2.6	3.6	5.0
85		2.0	3.4

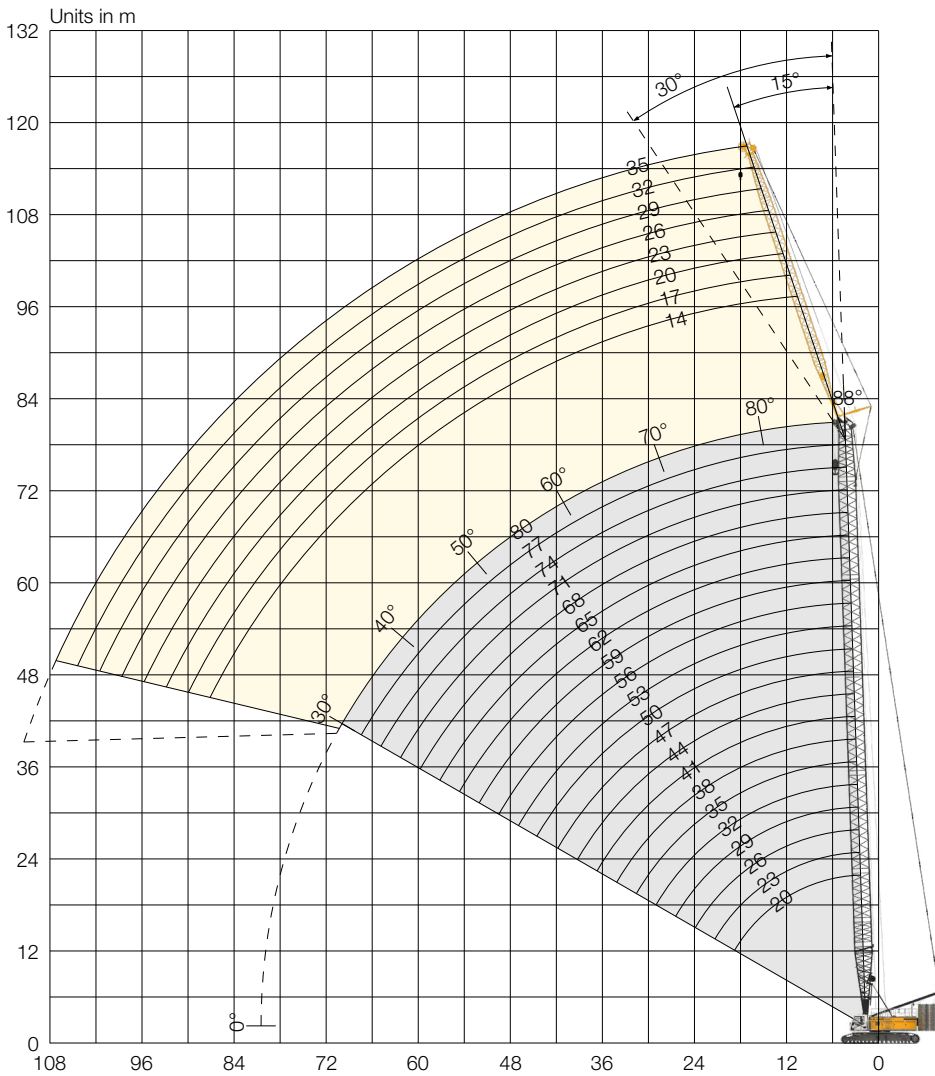
Main boom 83 m

Radius [m]	Jib [m]	
	11 [t]	14 [t]
10.7	37.5	
12	37.3	
14	35.7	28.0
16	34.2	26.9
18	32.8	25.9
20	31.8	24.9
24	29.4	23.4
28	27.8	22.0
32	26.3	20.8
36	25.2	19.7
40	23.5	18.9
44	19.9	17.7
48	17.0	16.3
55	12.6	13.2
60	9.8	10.4
65	7.3	7.9
70	5.2	5.8
75	3.3	3.9
80		2.2

TLT 11959002. Above load charts are for reference only.
For actual lift duty please refer to load chart in operator's cabin or manual.

Fixed jib (No. 1713.xx)

Main boom 88-30°, 20-80m | Fixed jib 15° and 30°, 14-35m



Max. combination	109m
Main boom	74m
Fixed jib	35m

Jib configuration (No. 1713.xx)

	Length	Amount of jib sections							
		1	1	1	1	1	1	1	1
Jib foot	7 m	1	1	1	1	1	1	1	1
Jib section	3 m		1		1		1		1
Jib section	6 m			1	1			1	1
Jib section	12 m					1	1	1	1
Jib head	7 m	1	1	1	1	1	1	1	1
Jib length [m]		14	17	20	23	26	29	32	35

Load capacities with fixed jib 15° (No. 1713.xx) | 124 t rear counterweight and 57 t carbody counterweight

Main boom 20 m

Radius [m]	Jib [m]		
	14 [t]	23 [t]	35 [t]
13	46.0		
14	43.8	30.0	
16	38.8	26.5	19.4
18	35.1	24.2	17.5
20	31.7	22.0	16.1
24	27.4	18.9	13.8
28	24.0	16.5	11.9
32	21.7	14.7	10.6
36		13.3	9.4
40		12.2	8.5
44			7.7
48			7.1
52			6.6

Main boom 32 m

Radius [m]	Jib [m]		
	14 [t]	23 [t]	35 [t]
10	58.3		
12	54.6	35.0	
14	48.6	31.6	
16	45.0	29.5	19.7
18	41.1	26.7	18.2
20	37.9	24.9	16.9
24	32.7	21.7	14.7
28	29.6	19.4	13.1
32	26.3	17.3	11.7
36	24.0	15.9	10.6
40	22.3	14.5	9.6
44	15.1	13.5	8.9
48		12.7	8.2
52		12.0	7.6
60			6.8

Main boom 47 m

Radius [m]	Jib [m]		
	14 [t]	23 [t]	35 [t]
10	60.0		
12	56.9	35.3	
14	53.9	32.7	
16	49.2	30.1	19.9
18	45.7	28.7	18.7
20	43.7	26.5	17.5
24	38.2	23.8	15.7
28	34.4	21.3	14.1
32	31.0	19.6	12.9
36	29.0	17.9	11.7
40	26.7	16.5	10.9
44	23.7	14.5	10.0
48	20.5	14.5	9.3
55	16.1	13.1	8.3
60		12.4	7.7
65			7.2
70			6.8

Main boom 62 m

Radius [m]	Jib [m]		
	14 [t]	23 [t]	35 [t]
9	60.0		
10	60.0		
12	59.6	35.3	
14	55.6	33.6	
16	52.9	31.6	
18	49.2	30.1	18.9
20	46.2	28.7	18.1
24	42.4	25.5	16.3
28	38.2	23.5	14.9
32	35.2	21.5	13.7
36	30.7	20.1	12.7
40	25.9	18.7	11.7
44	22.0	17.5	11.0
48	18.8	16.5	10.3
55	14.5	14.7	9.2
60	12.0	12.8	8.7
65	9.8	10.7	8.1
70	7.7	8.7	7.7
75		6.8	7.3
80			6.2
90			3.4

Main boom 80 m

Radius [m]	Jib [m]	
	14 [t]	17 [t]
10	58.4	
12	56.7	49.0
14	54.8	46.0
16	52.4	44.3
18	50.7	41.8
20	48.8	40.0
24	44.4	36.2
28	38.7	33.4
32	32.3	30.2
36	27.2	27.2
40	23.1	23.3
44	19.6	19.8
48	16.7	16.9
55	12.4	12.7
60	9.6	10.0
65	6.8	7.6
70	5.2	5.5
75	3.4	3.7
80		2.0

TLT 11959002. Above load charts are for reference only.
For actual lift duty please refer to load chart in operator's cabin or manual.

Load capacities with fixed jib 30° (No. 1713.xx) | 124t rear counterweight and 57t carbody counterweight

Main boom 20m

Radius [m]	Jib [m]		
	14 [t]	23 [t]	35 [t]
15	46.0		
16	30.4		
18	28.1	19.3	
20	26.5	18.0	
24	23.7	15.9	11.3
28	21.7	14.4	10.0
32	20.5	13.1	9.1
36		12.2	8.2
40		11.6	7.6
44			7.0
48			6.6
52			6.3

Main boom 32m

Radius [m]	Jib [m]		
	14 [t]	23 [t]	35 [t]
13	35.6		
14	34.4		
16	32.3		
18	30.6	20.2	
20	29.0	19.1	
24	26.5	17.3	11.5
28	24.3	15.8	10.5
32	22.8	14.7	9.6
36	21.5	13.6	8.8
40	20.7	12.9	8.2
44	20.1	12.2	7.7
48		11.8	7.2
52		11.7	6.8
60			6.4
65			6.3

Main boom 47m

Radius [m]	Jib [m]		
	14 [t]	23 [t]	35 [t]
12	37.5		
14	35.6		
16	33.9		
18	32.4	20.1	
20	31.0	19.3	
24	28.6	17.8	11.6
28	26.7	16.6	10.7
32	25.1	15.5	10.0
36	23.7	14.7	9.3
40	22.7	13.8	8.5
44	21.8	13.2	8.3
48	20.9	12.6	7.9
55	16.2	11.9	7.2
60		11.6	6.9
65			6.6
70			6.4

Main boom 62m

Radius [m]	Jib [m]		
	14 [t]	23 [t]	35 [t]
12	37.2		
14	36.0		
16	34.6		
18	33.4	20.7	
20	32.2	19.9	
24	30.1	18.6	
28	28.4	17.5	10.9
32	26.9	16.6	10.3
36	25.6	15.7	9.7
40	24.3	15.0	9.2
44	22.7	14.3	8.7
48	19.4	13.7	8.3
55	14.9	12.9	7.7
60	12.3	12.3	7.3
65	10.0	11.1	7.0
70	7.9	9.1	6.8
75		7.1	6.5
80			6.3
90			3.6

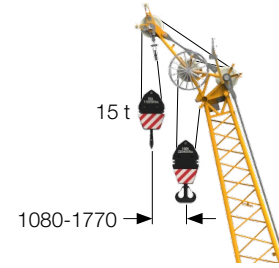
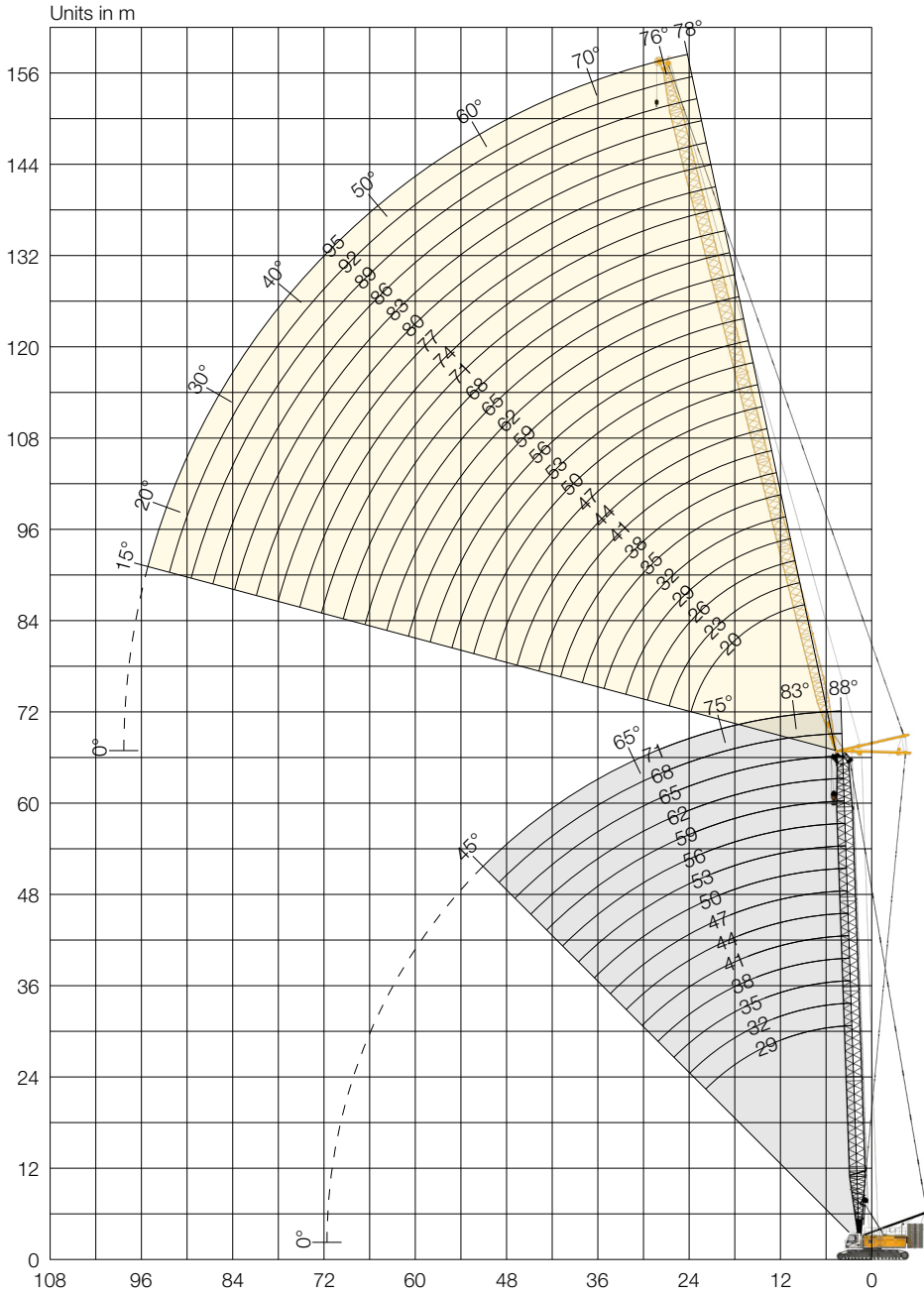
Main boom 80m

Radius [m]	Jib [m]	
	14 [t]	17 [t]
13	36.5	
14	36.4	
16	35.2	28.7
18	34.1	17.8
20	33.1	26.9
24	31.3	25.5
28	29.7	24.1
32	28.1	23.2
36	36.4	22.2
40	24.2	21.3
44	20.6	20.6
48	17.5	17.9
55	13.1	13.4
60	10.2	10.7
65	7.7	8.2
70	5.6	6.0
75	3.7	4.1
80		2.4

TLT 11959002. Above load charts are for reference only.
For actual lift duty please refer to load chart in operator's cabin or manual.

Luffing jib (No. 1916.xx)

Main boom 88-45°, 29-71 m | Luffing jib 78-15°, 20-95 m



Auxiliary jib 15 t (option)
 The maximum capacity of the auxiliary jib is 15 t. The corresponding load chart is programmed in the LML system.

Max. combination	160 m
Main boom	65 m
Luffing jib	95 m
Max. combination	115 m
Main boom	71 m
Luffing jib	44 m

Jib configuration (No. 1916.xx)

Length	Amount of jib sections																									
	20	23	26	29	32	35	38	41	44	47	50	53	56	59	62	65	68	71	74	77	80	83	86	89	92	95
Jib foot	1	1	1	1	1	1	1	1	1	1	1	1	1	1	1	1	1	1	1	1	1	1	1	1	1	1
Jib section		1		1		1		1		1		1		1		1		1		1		1		1		1
Jib section	1	1			1	1			1	1			1	1			1	1			1	1			1	1
Jib section			1	1	1	1	2	2	2	2	3	3	3	3	4	4	4	4	5	5	5	5	6	6	6	6
Jib head	1	1	1	1	1	1	1	1	1	1	1	1	1	1	1	1	1	1	1	1	1	1	1	1	1	1
Jib length [m]	20	23	26	29	32	35	38	41	44	47	50	53	56	59	62	65	68	71	74	77	80	83	86	89	92	95
Auxiliary jib applicable	✓	✓	✓	✓	✓	✓	✓	✓	✓	✓	✓	✓	✓	✓	✓	✓	✓	✓	✓	✓	✓	✓	✓	✓	✓	✓

Load capacities with luffing jib (No. 1916.xx) | 124 t rear counterweight and 57 t carbody counterweight

Main boom 29 m | 88°

Radius [m]	Jib [m]				
	20 [t]	41 [t]	65 [t]	83 [t]	95 [t]
14		39.1			
16	61.5	36.0			
18	54.8	33.3	17.5		
20	48.3	30.8	16.8		
22	38.8	28.6	16.1	9.6	
24		26.9	15.5	9.2	6.2
28		23.8	14.5	8.6	5.8
36		19.3	13.2	7.7	5.2
42		15.9	12.3	7.2	4.9
50			11.2	6.6	4.6
60			9.4	6.0	3.5
65			7.7	5.6	3.2
75				4.9	2.5
80				4.4	2.3

Main boom 50 m | 88°

Radius [m]	Jib [m]				
	20 [t]	41 [t]	65 [t]	83 [t]	95 [t]
9.1	78.7				
10	75.8				
14	67.1	37.3			
18	49.8	32.5			
22	41.1	28.4	15.4		
24		26.9	14.8	8.9	
28		24.1	14.0	8.4	5.6
36		19.8	12.8	7.6	4.9
42		16.9	12.0	7.0	4.5
50			11.1	6.4	4.1
60			9.7	5.9	3.4
65			8.3	5.6	3.2
75				5.1	2.5
80				4.6	2.2
85				3.7	

Main boom 71 m | 88°

Radius [m]	Jib [m]	
	32 [t]	44 [t]
12.3	42.5	
14	41.8	
18	37.8	27.2
22	3.5	24.3
24	31.6	22.9
28	28.6	20.9
36	21.7	17.6
42		15.4

TLT 11959002. Above load charts are for reference only.
For actual lift duty please refer to load chart in operator's cabin or manual.

Load capacities with luffing jib (No. 1916.xx) | 124t rear counterweight and 57t carbody counterweight

Main boom 29m | 83°

Radius [m]	Jib [m]				
	20 [t]	41 [t]	65 [t]	83 [t]	95 [t]
12.6	80.0				
14	77.1				
18	62.0				
20	56.5	33.5			
22	50.8	28.6			
24	43.3	26.9			
28		23.8	15.0		
36		19.3	13.6	8.0	5.4
42		15.9	12.6	7.4	4.9
50			11.6	6.8	4.4
60			10.3	6.2	3.7
65			7.7	5.8	3.4
75				5.3	2.7
80				4.8	2.5
85				4.4	2.2

Main boom 50m | 83°

Radius [m]	Jib [m]				
	20 [t]	41 [t]	65 [t]	83 [t]	95 [t]
15.1	70.4				
18	59.9				
22	49.6	31.9			
24	45.8	29.9			
28	37.1	27.1			
36		22.6	13.4	7.8	
42		19.5	12.7	7.3	4.8
50			11.8	6.7	4.3
60			10.7	6.0	3.7
65			9.8	5.8	3.4
75				5.3	2.8
80				5.0	2.5
85				4.7	2.3
90					2.1

Main boom 71m | 83°

Radius [m]	Jib [m]	
	32 [t]	44 [t]
21.2	37.7	
22	37.6	
24	36.2	
28	33.4	24.0
36	27.1	20.3
42	22.7	17.9
50		15.2

TLT 11959002. Above load charts are for reference only.
For actual lift duty please refer to load chart in operator's cabin or manual.

Load capacities with luffing jib (No. 1916.xx) | 124 t rear counterweight and 57 t carbody counterweight

Main boom 29 m | 75°

Radius [m]	Jib [m]				
	20	41	65	83	95
	[t]	[t]	[t]	[t]	[t]
20	66.7				
22	59.7				
24	54.6				
28	45.0	27.2			
36		23.7			
42		20.2	13.2		
50		16.2	12.2	7.0	
60			11.0	6.3	4.0
65			10.3	6.1	3.6
75				5.6	3.0
80				5.3	2.7
85				5.0	2.4
90				4.7	2.2

Main boom 50 m | 75°

Radius [m]	Jib [m]				
	20	41	65	83	95
	[t]	[t]	[t]	[t]	[t]
25	49.7				
28	44.5				
34	37.2	27.5			
42		23.5			
50		19.4	12.5		
55		17.1	11.9	6.8	
60			11.5	6.5	4.1
65			11.1	6.2	3.8
75			9.5	5.7	3.2
80				5.5	3.0
85				5.3	2.7
90				5.1	2.4
95				4.1	2.2

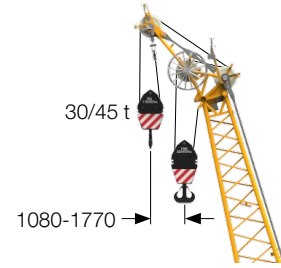
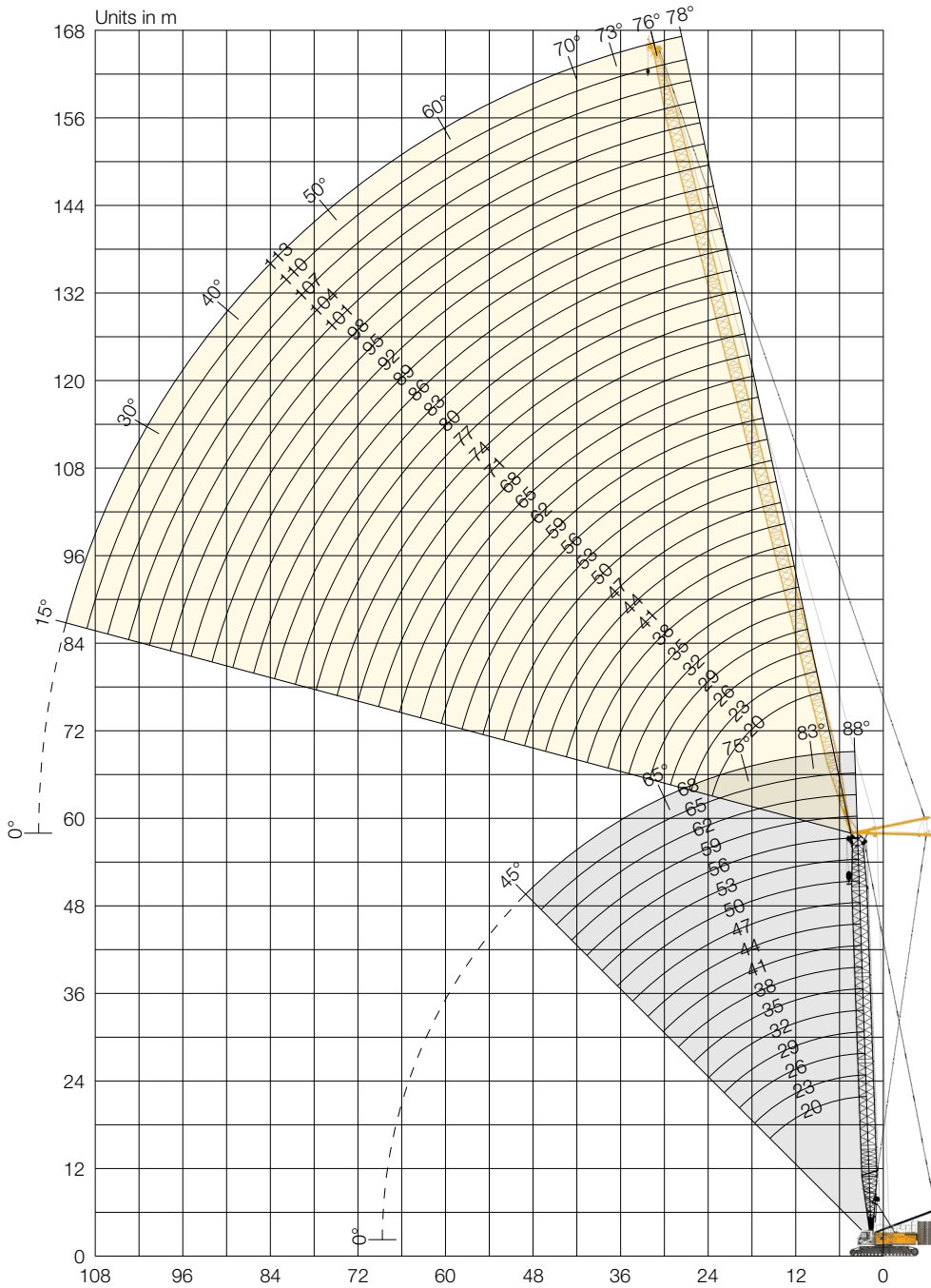
Main boom 71 m | 75°

Radius [m]	Jib [m]	
	32	44
	[t]	[t]
36	26.3	
42	22.8	20.3
50	19.4	17.2
55		15.6
60		14.4

TLT 11959002. Above load charts are for reference only.
For actual lift duty please refer to load chart in operator's cabin or manual.

Luffing jib (No. 2316.xx)

Main boom 88-45°, 20-68m | Luffing jib 78-15°, 20-113m



Auxiliary jib 30/45 t (option)
The maximum capacity of the auxiliary jib is 30/45 t. The corresponding load chart is programmed in the LML system.

Max. combination	169m
Main boom	56m
Luffing jib	113m
Max. combination	106m
Main boom	68m
Luffing jib	38m

Jib configuration (No. 2316.xx)

Jib configuration	Length	Amount of jib sections																																		
		20	23	26	29	32	35	38	41	44	47	50	53	56	59	62	65	68	71	74	77	80	83	86	89	92	95	98	101	104	107	110	113			
Jib foot	10 m	1	1	1	1	1	1	1	1	1	1	1	1	1	1	1	1	1	1	1	1	1	1	1	1	1	1	1	1	1	1	1	1	1	1	
Jib section	3 m		1		1		1		1		1		1		1		1		1		1		1		1		1		1		1		1		1	
Jib section	6 m			1	1																															
Jib section	12 m					1	1	1	1	2	2	2	2	3	3	3	3	4	4	4	4	5	5	5	5	6	6	6	6	7	7	7	7	7	7	
Jib head	10 m	1	1	1	1	1	1	1	1	1	1	1	1	1	1	1	1	1	1	1	1	1	1	1	1	1	1	1	1	1	1	1	1	1	1	
Jib length [m]		20	23	26	29	32	35	38	41	44	47	50	53	56	59	62	65	68	71	74	77	80	83	86	89	92	95	98	101	104	107	110	113			
Auxiliary jib applicable		✓	✓	✓	✓	✓	✓	✓	✓	✓	✓	✓	✓	✓	✓	✓	✓	✓	✓	✓	✓	✓	✓	✓	✓	✓	✓	✓	✓	✓	✓	✓	✓	✓	✓	

Load capacities with luffing jib (No. 2316.xx) | 124 t rear counterweight and 57 t carbody counterweight

Main boom 20 m | 88°

Radius [m]	Jib [m]							
	20 [t]	41 [t]	53 [t]	65 [t]	77 [t]	89 [t]	101 [t]	110 [t]
12.4		80.5						
15		65.0	57.6					
17	59.1	52.8	52.3					
18	53.7	48.9	47.3	40.4				
20	45.1	41.9	40.4	37.6	28.6			
22	39.4	35.5	34.3	33.7	28.1			
24		31.4	30.1	29.4	26.3	19.1		
26		28.4	27.0	25.8	24.5	18.4	13.7	
28		25.9	24.2	23.1	21.9	17.9	13.4	10.5
36		18.8	17.6	16.1	15.0	14.0	11.4	9.2
42		15.4	14.2	12.7	11.8	10.3	9.4	8.4
50			11.0	9.8	8.5	7.3	6.2	5.5
60				7.2	6.0	4.7	3.7	2.9
65				6.1	5.1	3.8	2.7	
75					3.5	2.3		

Main boom 32 m | 88°

Radius [m]	Jib [m]							
	20 [t]	41 [t]	56 [t]	65 [t]	77 [t]	89 [t]	101 [t]	113 [t]
11	117.0							
13	110.6	76.0						
16	82.8	71.2	49.9					
18	68.6	63.2	48.8	37.2				
22	49.0	46.4	42.3	34.9	26.8			
24		40.4	39.0	33.2	25.8	18.3		
26		36.1	35.1	31.7	25.1	17.8	13.0	
28		32.5	31.5	30.3	24.4	17.3	12.8	9.3
36		23.5	22.3	21.6	20.2	15.9	11.6	8.5
42		19.4	18.2	17.2	16.6	13.8	10.9	7.8
55			12.3	11.3	10.6	9.2	8.6	6.8
65				8.5	7.5	6.3	5.4	4.5
75					5.4	4.2	3.2	2.3
80						3.4	2.3	
85						2.6		

Main boom 41 m | 88°

Radius [m]	Jib [m]							
	20 [t]	41 [t]	53 [t]	65 [t]	77 [t]	89 [t]	101 [t]	113 [t]
8.8	117.0							
14	96.2	69.4						
16	78.4	67.1	50.5					
19	60.3	57.0	48.1	35.5				
22	47.6	45.0	41.7	33.6	25.4			
24		39.3	38.1	32.1	24.5	17.6		
26		35.2	33.8	30.5	23.8	17.2	12.6	
28		31.8	30.3	29.4	23.2	16.8	12.5	
38		21.7	20.3	19.4	18.0	14.9	11.1	8.0
44		15.1	16.6	15.7	14.7	12.7	10.2	7.4
55			12.1	11.1	10.2	8.9	8.1	6.3
65				8.3	7.3	6.2	5.2	4.3
75					5.3	4.1	3.1	2.2
80						3.3	2.3	
85						2.6		

Main boom 56 m | 88°

Radius [m]	Jib [m]							
	20 [t]	41 [t]	53 [t]	65 [t]	77 [t]	92 [t]	101 [t]	113 [t]
9.3	101.3							
14	83.1	57.6						
17	65.5	55.4	43.1					
19	56.1	49.4	42.0	31.5				
22	45.2	40.6	37.3	30.4	22.6			
24	39.3	35.6	34.0	29.3	22.2			
26		32.1	30.6	27.5	21.6	14.5		
28		29.2	27.7	26.2	21.1	14.2	11.5	
38		20.1	18.8	17.9	16.5	12.9	10.3	7.4
44		16.8	15.5	14.5	13.5	11.0	9.4	6.9
55			11.4	10.3	9.4	7.9	7.2	5.4
65				7.8	6.7	5.4	4.6	3.8
70					5.8	4.4	3.6	2.7
75					4.9	3.5	2.8	
85						2.1		

Main boom 59 m | 88°

Radius [m]	Jib [m]							
	20 [t]	41 [t]	53 [t]	65 [t]	77 [t]	89 [t]	101 [t]	104 [t]
9.4	94.8							
14	79.3	55.6						
17	63.1	53.7	41.8					
19	54.1	48.3	40.7	30.6				
22	43.5	40.2	36.4	29.7	22.2			
24	38.0	35.4	33.3	28.7	21.8	15.5		
28		29.0	27.3	25.6	20.7	15.1	11.2	10.4
32		24.8	23.2	21.9	19.7	14.6	10.9	10.2
36		21.4	19.9	18.9	17.5	14.0	10.5	9.9
40		19.0	17.5	16.4	15.1	12.8	10.0	9.4
44		16.8	15.3	14.3	13.3	11.2	9.3	8.9
55			11.3	10.2	9.3	7.8	7.0	6.7
65				7.8	6.6	5.4	4.4	4.2
75					4.8	3.6	2.7	2.5
85						2.2		

Main boom 65 m | 88°

Radius [m]	Jib [m]		
	20 [t]	41 [t]	53 [t]
9.6	84.8		
14	73.6	50.7	
17	60.7	48.7	37.8
19	52.8	44.7	36.8
20	49.0	43.3	36.2
22	43.0	38.0	33.6
24	37.9	33.5	31.0
26		30.3	28.3
34		21.9	20.2
38		19.2	17.5
40		18.1	16.5
42		17.1	15.4
44		16.1	14.5
55			10.6
65			

Main boom 68 m | 88°

Radius [m]	Jib [m]
	38 [t]
13.4	52.0
14	52.0
16	49.7
18	46.5
20	42.6
22	36.8
24	32.8
26	29.7
28	27.1
32	23.4
34	21.7
36	20.2
38	19.1
40	18.0
42	15.1

TLT 11959002. Above load charts are for reference only. For actual lift duty please refer to load chart in operator's cabin or manual.

Load capacities with luffing jib (No. 2316.xx) | 124t rear counterweight and 57t carbody counterweight

Main boom 20m | 83°

Radius [m]	Jib [m]							
	20 [t]	41 [t]	53 [t]	65 [t]	77 [t]	89 [t]	101 [t]	110 [t]
11.5	117.0							
18	64.7	61.6						
22	45.3	44.3	45.0					
24	39.6	37.5	37.9					
26		32.9	32.8	33.7				
30		26.5	26.1	36.5	25.1			
32		24.4	23.7	23.4	23.4	17.2		
36		20.9	19.7	19.3	19.2	16.5	12.2	
38		19.5	18.3	17.7	17.3	15.9	12.1	9.1
44		15.8	14.8	13.7	13.2	12.2	11.3	8.6
55			10.4	9.5	8.5	7.3	6.7	5.9
65				6.9	5.9	4.8	3.8	3.3
70					5.0	3.8	2.8	2.1
75					4.1	3.0	2.1	
80						2.3		

Main boom 32m | 83°

Radius [m]	Jib [m]							
	20 [t]	41 [t]	53 [t]	65 [t]	77 [t]	89 [t]	101 [t]	113 [t]
13	109.2							
20	73.0	64.8						
24	55.5	54.0	47.3					
26	47.2	50.0	45.3					
28		45.6	43.1	32.9				
30		41.1	40.3	32.1	24.6			
34		34.4	35.2	30.2	23.8	16.7		
38		28.5	29.5	28.4	22.7	16.1	11.8	
46		20.8	21.4	21.7	20.1	14.7	10.8	7.7
55			15.5	15.7	16.0	13.0	10.0	7.0
65				11.1	11.1	10.9	8.9	6.2
80					6.2	5.7	5.4	4.4
85						4.6	4.0	3.0
90						3.4	2.9	
95							2.2	

Main boom 41m | 83°

Radius [m]	Jib [m]							
	20 [t]	41 [t]	53 [t]	65 [t]	77 [t]	89 [t]	101 [t]	113 [t]
14	93.9							
22	61.7	56.5						
24	55.9	51.8	44.8					
26	49.9	47.2	43.3					
28		44.0	40.9	31.9				
32		37.5	35.5	30.7	23.3			
36		32.1	31.0	28.2	22.5	16.1		
38		29.4	28.8	27.1	22.0	15.8	11.4	
46		21.8	21.6	21.5	19.7	14.5	10.7	7.5
55			15.8	16.0	15.9	12.9	9.7	6.8
70				9.6	9.4	9.1	8.2	5.5
80					6.6	5.9	5.6	4.6
85						4.8	4.2	3.2
90						3.7	3.2	
95							2.4	

Main boom 56m | 83°

Radius [m]	Jib [m]							
	20 [t]	41 [t]	53 [t]	65 [t]	77 [t]	89 [t]	101 [t]	113 [t]
15.9	75.6							
22	56.8	47.9						
26	48.4	42.4	38.1					
28	44.4	38.9	36.3					
30		36.4	33.8	28.8				
34		31.8	29.6	27.0	20.9			
38		27.9	26.4	24.2	20.3	14.8		
40		25.9	24.9	23.0	19.8	14.6	10.5	
44		22.9	22.5	20.8	18.3	14.0	10.2	7.2
48		19.9	19.5	18.7	17.1	13.2	9.9	7.0
60			13.1	13.1	12.8	10.8	8.6	6.1
70				9.7	9.1	8.4	7.3	5.2
80					6.6	5.7	5.3	4.2
90						3.7	3.1	2.2
95						2.8	2.4	

Main boom 59m | 83°

Radius [m]	Jib [m]							
	20 [t]	41 [t]	53 [t]	65 [t]	77 [t]	89 [t]	101 [t]	104 [t]
16.2	71.7							
24	50.9	44.7						
26	47.0	41.5	36.7					
28	43.4	38.2	35.5					
30		35.7	33.0	28.2				
34		31.2	28.9	26.4	20.6			
38		27.6	25.8	23.6	20.0	14.3		
40		25.8	24.3	22.4	19.5	14.2	10.3	
42		24.1	23.1	21.4	18.7	14.0	10.3	9.6
46		21.3	20.6	19.2	17.2	13.3	10.0	9.4
48		19.8	19.3	18.3	16.6	12.9	9.8	9.2
60			13.2	12.9	12.5	10.4	8.5	8.0
70				9.6	9.1	8.2	7.0	6.6
80					6.6	5.6	5.1	5.1
95						2.7	2.3	2.2

Main boom 65m | 83°

Radius [m]	Jib [m]		
	20 [t]	41 [t]	53 [t]
17	63.3		
24	48.0	41.7	
26	44.5	39.0	
28	41.7	36.2	33.0
30	38.7	33.7	31.0
32		31.6	29.0
34		29.5	27.1
36		27.8	25.6
38		26.3	24.2
40		24.7	22.8
42		23.2	21.6
46		20.7	19.5
48		19.3	18.3
50		18.0	17.1
60			12.7

Main boom 68m | 83°

Radius [m]	Jib [m]
	38 [t]
22.6	42.5
24	41.6
26	38.6
28	35.7
30	33.6
32	31.2
34	29.2
36	27.6
38	26.0
40	24.5
42	23.3
44	21.9
46	20.4
48	15.1

TLT 11959002. Above load charts are for reference only.
For actual lift duty please refer to load chart in operator's cabin or manual.

Load capacities with luffing jib (No. 2316.xx) | 124 t rear counterweight and 57 t carbody counterweight

Main boom 20 m | 75°

Radius [m]	Jib [m]							
	20	41	53	65	77	89	101	110
18	85.3							
26	43.8	44.9						
32		30.2	32.0					
36		25.1	25.3	24.9				
42		19.9	19.1	19.4	18.8			
44		18.5	17.8	17.7	18.0			
46		17.1	16.5	16.2	16.3	14.0		
48		15.1	15.4	14.9	15.1	13.9		
50			14.5	13.9	14.1	13.0		
55			12.3	11.6	11.1	11.2	9.8	7.5
60				9.8	9.2	8.6	8.4	7.2
70				6.8	6.4	5.4	4.8	4.7
75					5.3	4.2	3.6	3.2
80					4.2	3.2	2.5	2.1
85						2.5		

Main boom 32 m | 75°

Radius [m]	Jib [m]							
	20	41	53	65	77	89	101	113
20	70.1							
30	45.6	43.0						
34		37.6	34.5					
40		31.0	30.0	27.3				
44		27.5	26.7	24.9	20.7			
50		23.4	22.7	21.6	19.9	14.7		
55			20.0	19.2	17.8	14.1	10.0	
60			17.7	17.0	16.0	13.3	9.8	6.7
70				13.5	12.8	11.4	9.0	6.2
80					10.0	9.0	7.9	5.5
85					8.8	7.8	6.8	5.0
90						6.8	5.8	3.4
95						5.8	4.9	
100							4.0	
105							3.3	

Main boom 41 m | 75°

Radius [m]	Jib [m]							
	20	41	53	65	77	89	101	113
22.3	58.6							
32	40.9	37.4						
38		31.2	29.2					
40		29.8	27.6					
42		28.1	26.3	23.7				
48		23.7	22.7	21.0	18.7			
50		22.5	21.7	19.9	18.1			
55			19.1	17.9	16.2	13.7		
60			17.0	16.1	14.4	12.4	9.7	
65			14.8	14.4	13.1	11.2	9.3	6.4
75				11.4	10.4	9.2	7.7	5.8
85					8.0	7.0	5.9	4.7
90						6.0	4.9	3.9
95						5.1	4.1	2.5
105							2.6	

Main boom 56 m | 75°

Radius [m]	Jib [m]							
	20	41	53	65	77	89	101	113
26.2	44.7							
36	32.4	28.7						
42		24.4	22.5					
44		23.5	21.5					
46		22.4	20.6	18.3				
50		20.4	18.6	16.8				
55		18.2	16.7	15.0	13.1			
60			15.1	13.5	11.7	9.9		
65			13.7	12.2	10.5	8.8	7.0	
70				11.0	9.5	7.8	6.1	4.4
80				8.5	7.5	6.3	4.7	3.1
85					6.4	5.3	4.1	2.5
90					5.5	4.4	3.3	2.1
95						3.7	2.6	
100						2.9		

Main boom 59 m | 75°

Radius [m]	Jib [m]							
	20	41	53	65	77	89	101	104
28	40.7							
36	31.7	27.3						
42		23.6	21.6					
46		21.7	19.9	17.3				
48		20.7	18.9	17.1				
50		19.8	18.0	16.3				
55		17.9	16.2	14.6	12.8			
60			14.7	13.2	11.5	9.5		
65			13.2	11.9	10.3	8.4	7.1	6.6
70				10.6	9.3	7.5	6.3	6.0
75				9.3	8.2	6.8	5.5	5.2
80				8.1	7.1	6.0	4.8	4.5
90					5.2	4.1	3.0	2.8
95						3.3	2.3	2.1
100						2.6		

Main boom 65 m | 75°

Radius [m]	Jib [m]		
	20	41	53
28.5	36.8		
30	35.4		
32	33.4		
34	31.6		
36	30.0		
38	28.6	24.3	
40		23.2	
42		22.0	
44		20.9	19.0
46		20.0	18.1
48		19.1	17.4
50		18.3	16.6
55		16.7	14.9
65			12.3
70			10.9

Main boom 68 m | 75°

Radius [m]	Jib [m]
	38
28.5	36.9
30	34.2
32	31.6
34	29.0
36	26.4
38	23.8
40	21.2
42	18.6
44	16.0
46	13.4
48	10.8
50	8.2
55	5.6

TLT 11959002. Above load charts are for reference only. For actual lift duty please refer to load chart in operator's cabin or manual.



Please contact us.



Download datasheet

Liebherr-Werk Nenzing GmbH

Dr. Hans Liebherr Str. 1, 6710 Nenzing/Austria
Tel.: +43 50809 41-473, Fax: +43 50809 41-499
crawler.crane@liebherr.com, www.liebherr.com
facebook.com/LiebherrConstruction